

Voices of Florida Women

2022 Survey Report



Florida Commission on the Status of Women
November 2022

Voices of Florida Women 2022 Survey Report

Prepared for the Florida Commission
on the Status of Women

by

The Public Opinion Research Lab
at the University of North Florida

Michael Binder, PhD, Faculty Director
Andrew Hopkins, MPA, Assistant Director
Eva Matthews, MPA, Research Coordinator
Daniel Loe, Research Assistant
Madeline Read, Research Intern



November 2022

Contents

Introduction.....	1
Project Background	1
Figure 1. Executive Summary Infographic.....	1
Executive Summary.....	1
Methodology.....	2
Table 1. Strata, Sample Size & Margin of Error	2
Summary of Findings	3
Figure 2. Respondent Demographic Profile	3
Figure 3. Challenge: Open-Ended by Age Category.....	4
Figure 4. Most Impactful Challenge by Age Category.....	5
Figure 5. Most Impactful Challenge by Region	6
Figure 6. Most Impactful Challenge by Annual Household Income	7
Figure 7. Healthcare Challenges by Age Category.....	8
Figure 8. Economic Challenges by Age Category.....	9
Figure 9. Public Policy by Age Category	10
Figure 10. Substance Abuse Challenges by Age Category	11
Figure 11. COVID-19 Impact by Age Category	12
Figure 12. Local Government Responsiveness by Select Demographics	13
Figure 13. State Government Responsiveness by Select Demographics	14
Figure 14. Positive Change by Age Category	15
Figure 15. Mean Awareness of FCSW by Select Demographics.....	16
Appendix I. Survey Results	17
Appendix II. Survey Instrument.....	27

This report was prepared for the Florida Commission on the Status of Women (FCSW). The conclusions and opinions expressed in these reports do not necessarily represent those of the FCSW, Office of the Attorney General, or any agency of the State or Federal Government.

Introduction

Project Background

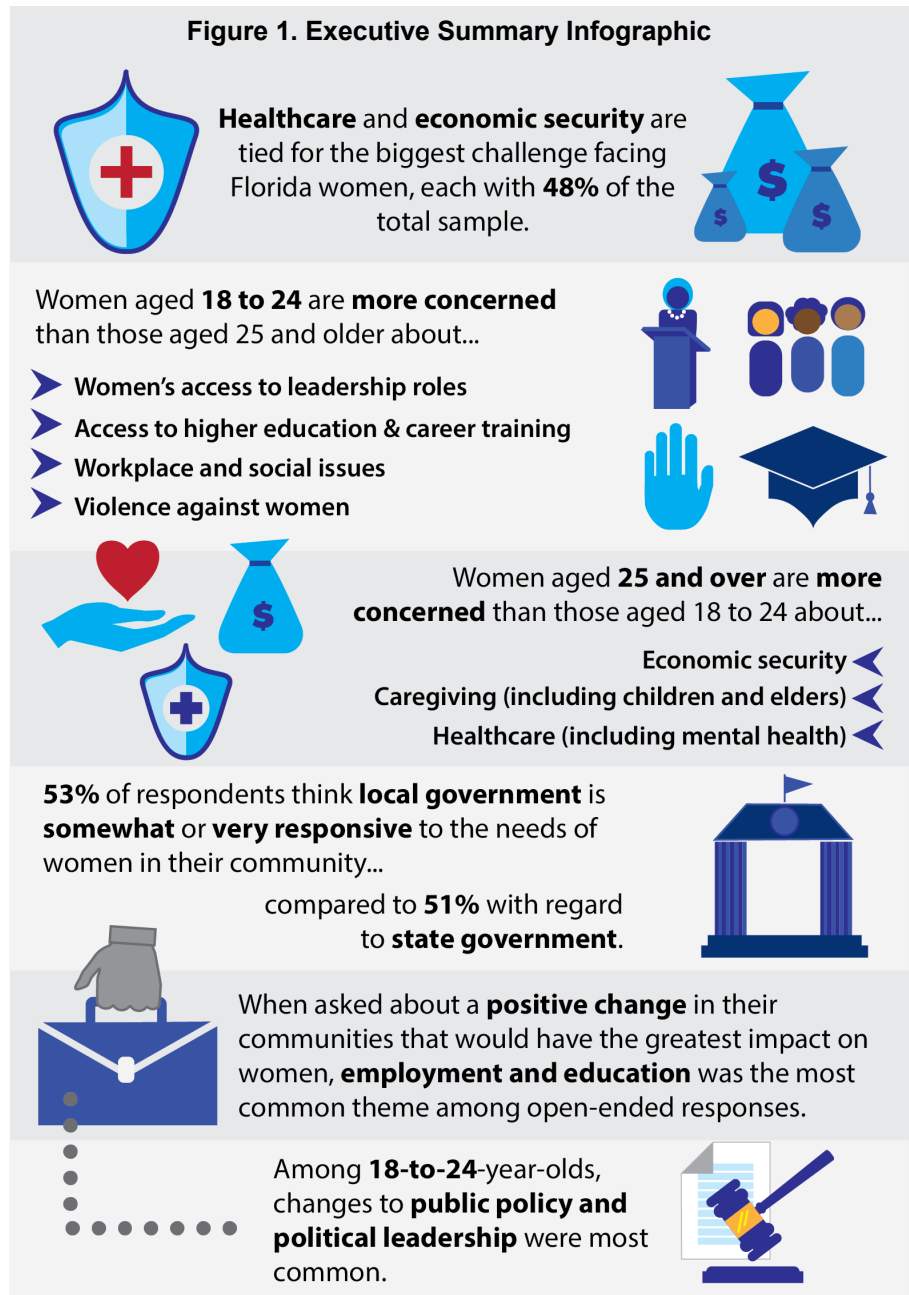
Florida is a peninsula that is geographically located in the most southeastern region of the U.S. and is bordered by Georgia and Alabama. Florida is comprised of 67 counties. According to the U.S. Census Bureau's 2020 American Community Survey (ACS) 5-year estimates there are 17,002,480 Florida residents over the age of 18, of whom 52% are women.

The Florida Commission on the Status of Women (FCSW) is a statutorily created, nonpartisan board, charged with informing the Governor, Cabinet, and Legislature on issues affecting Florida women and girls. With this goal in mind, FCSW contracted with the Public Opinion Research Laboratory (PORN) at the University of North Florida (UNF) to gather information about the attitudes and challenges of adult women in the state of Florida.

The goal of this study is to identify key issues facing women, understand critical needs women and their communities perceive as important, build trust with constituents, and highlight the diverse viewpoints of all segments of the population from across the state. In particular, the study places a special focus on women between the ages of 18 and 24, a population previously underrepresented in research.

Executive Summary

This report serves to inform the FCSW about the top issues, barriers, and challenges affecting Florida women. In order to best accomplish this, PORN conducted a survey of women across the state, asking about their most important and impactful challenges. Key findings from the survey are as follows (Figure 1):



Methodology

This survey was conducted online, using Qualtrics online survey platform. The sampling frame consisted of a panel of adult women residents in all counties across the State of Florida, provided by Cint, a global software leader in digital insights. Data collection took place between August 25 and September 1, 2022. The final sample consists of 1,500 Florida women 18 years of age or older, including an oversample of women aged 18 to 24 (n = 302).

It is important to note that population sizes, and thus sample sizes, in smaller counties limit the kinds of comparisons that can be made between individual counties (Table 1). For this reason, counties were grouped together, making a total of three larger geographical strata to maintain representativeness, while enabling more meaningful comparisons. The sample sizes (n) for each of these strata, along with margins of error, are outlined in Table 1. The margin of sampling error for the total sample is +/- 3.0 percentage points, with no statistical adjustments made for design effects. The margin of error for the 18 to 24 subpopulation is +/- 5.6 percentage points. Please note the margins of error within each stratum are greater than that of the entire sample.

To adjust for oversampling of women aged 18 to 24, and to correct for non-response bias, weights were applied to the data. In order to ensure that the results presented were representative of the target population, the total sample was weighted by age, race, and education to the estimated 2020 ACS 5-year estimates for the population of adult women in the State of Florida. All weighted demographic variables were applied using statistical analysis software SPSS version 27 rake weighting function, which will not assign a weight if one of the demographics being weighted is missing. Individuals with missing demographic information were assigned a weight of one.

For more information about methodology, contact Dr. Michael Binder by emailing porl@unf.edu or calling (904) 620-2784.

Table 1. Strata, Sample Size & Margin of Error

Stratum	Sample Size	MoE
North Florida	n=301	+/-6.0 pts
Central Florida	n=761	+/-4.7 pts
South Florida	n=438	+/-5.6 pts
Total	n=1,500	+/-3.0 pts

Summary of Findings

The figures on the following pages highlight findings from the 2022 Voices of Florida Women Survey. Data presented in these figures are weighted percentages. The full survey results and crosstabulations, including unweighted count totals, can be found in Appendix I of this report.

Figure 2. Respondent Demographic Profile

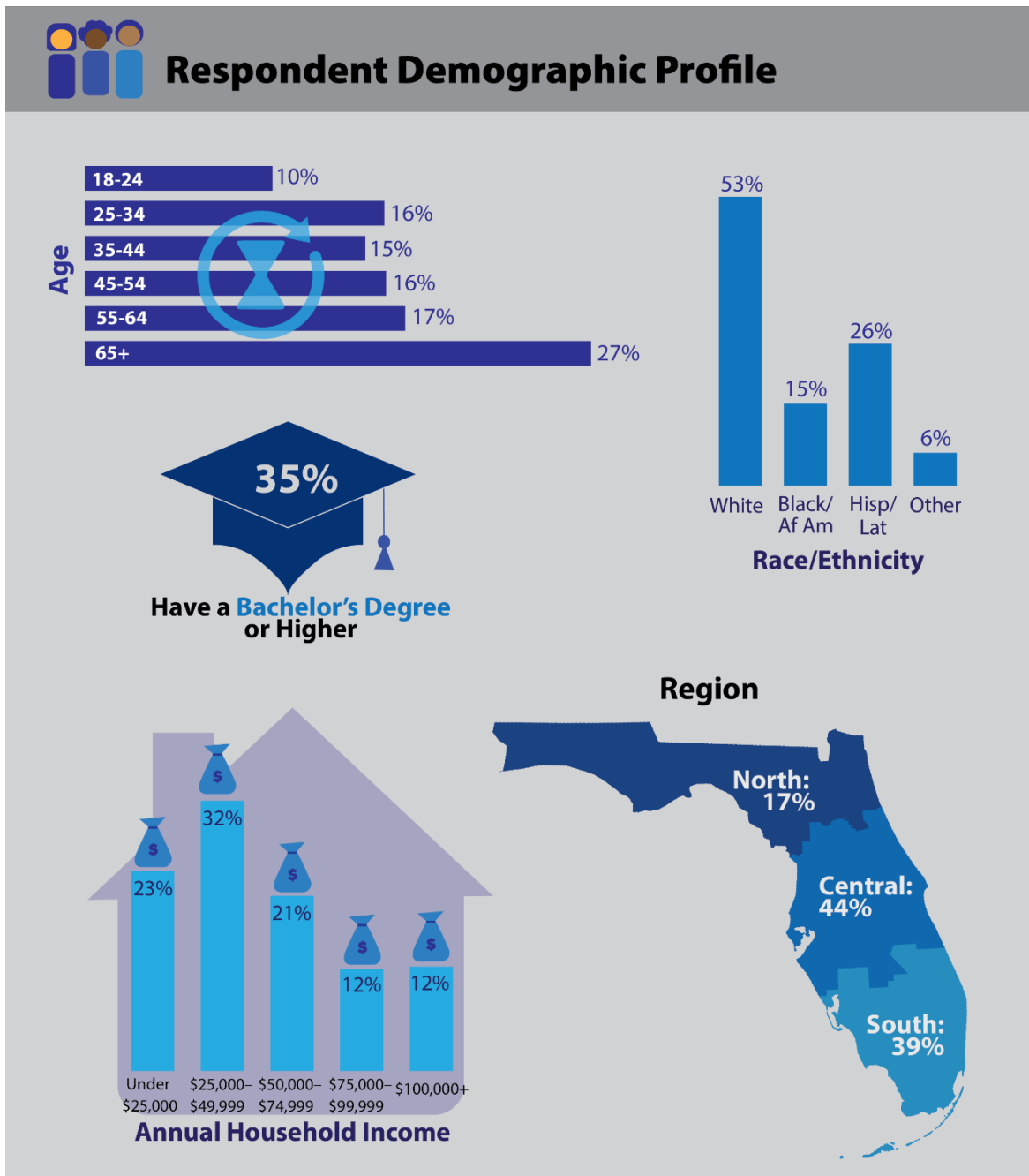
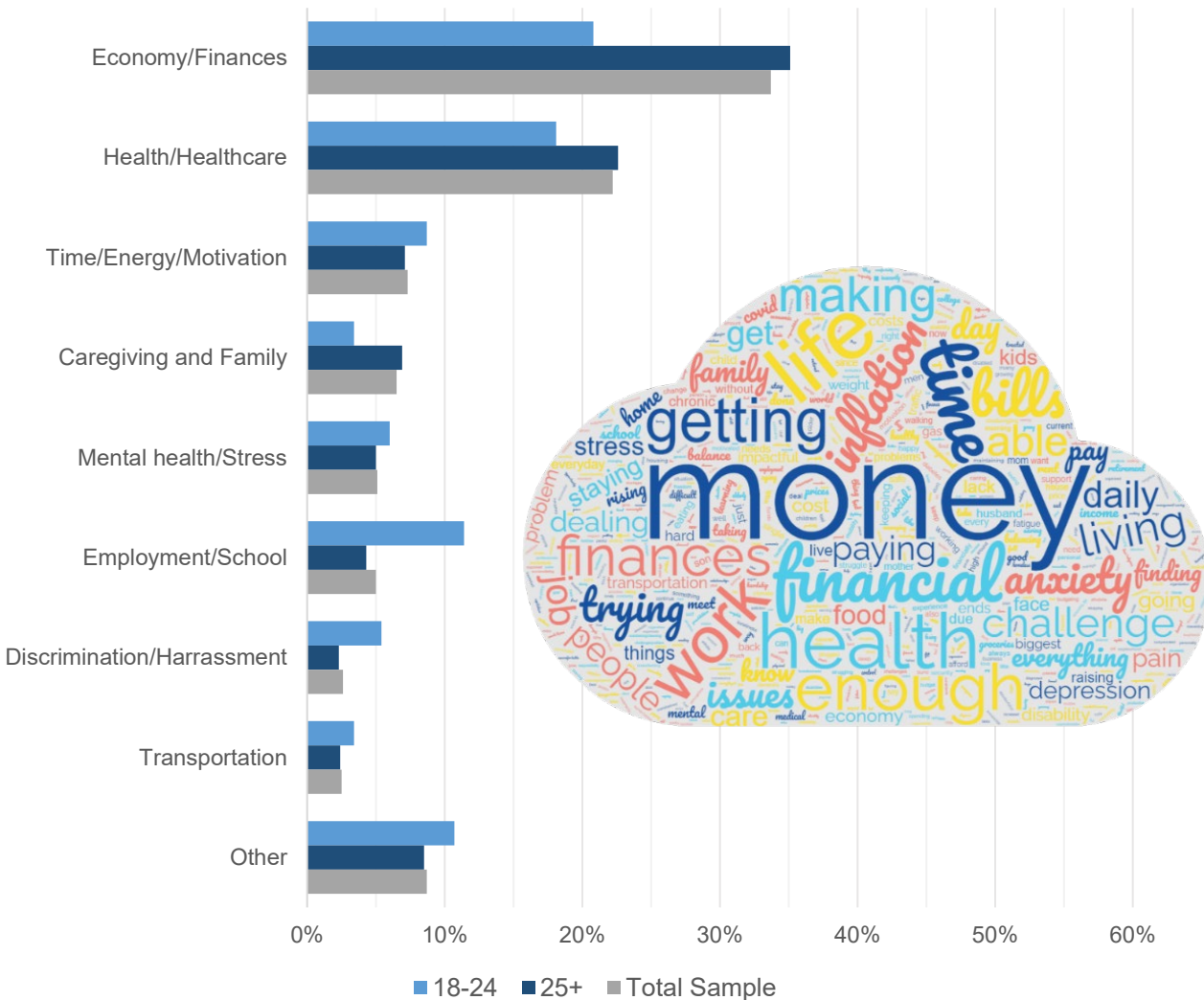


Figure 3. Challenge: Open-Ended by Age Category¹

What do you consider to be the most impactful challenge or problem that you face in your daily life? (Recoded)

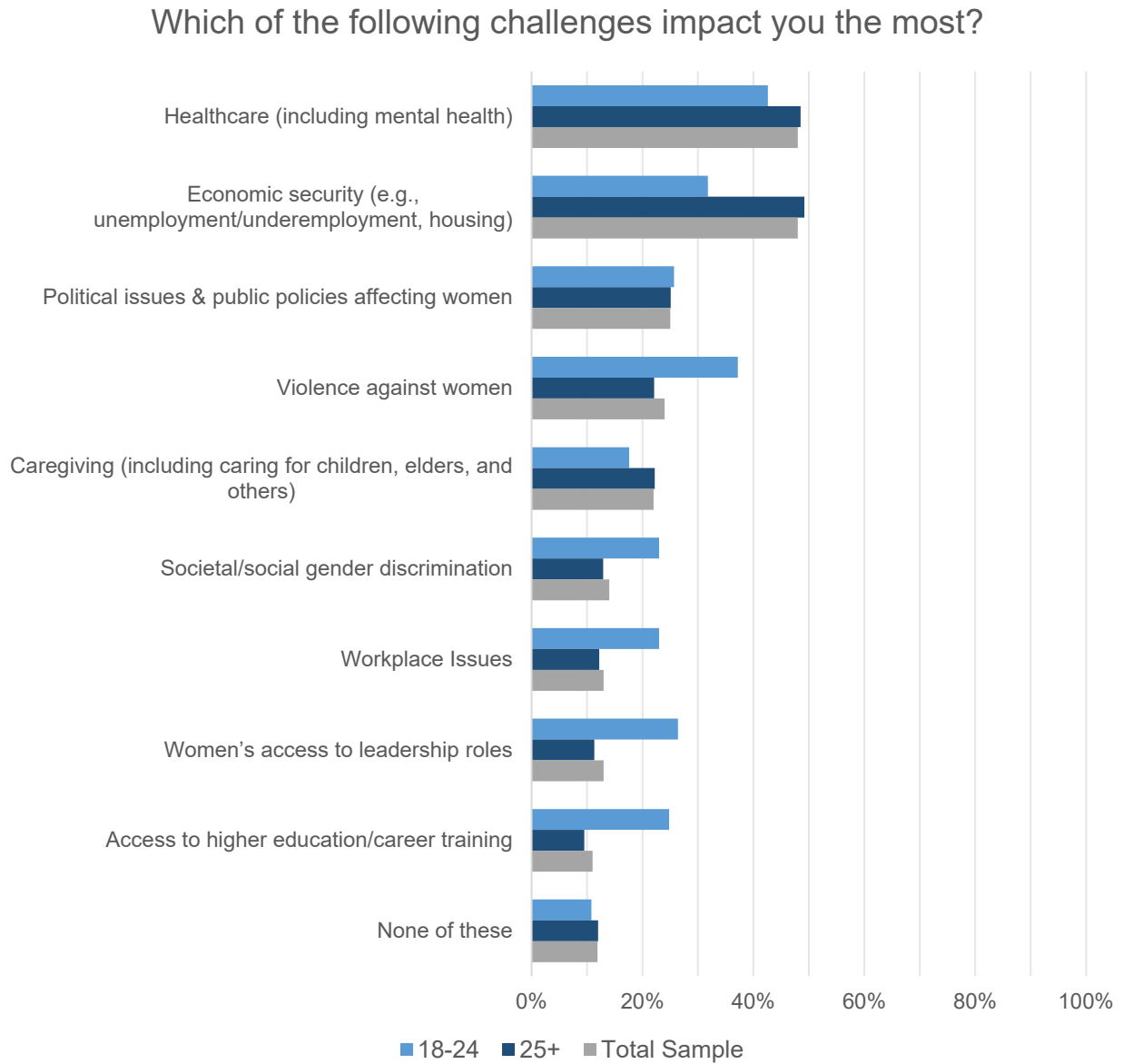


Respondents were asked to identify the most impactful challenge in an open-ended question. Respondents' answers were then recoded into several categories, listed in Figure 3, broken down by age category. In the total sample, 34% of responses center around economic issues and finances. Respondents aged 18 to 24 were less concerned with finances than those aged 25 and older. The second most common theme, with 22% overall, is health and healthcare. The younger age category also have fewer health concerns than the older group, at 18% and 23%, respectively. Areas in which 18 to 24-year-olds show more concern than the older group include employment and education, time management and energy, and mental health.

The word cloud shows some of the most common words and phrases used by respondents when answering this open-ended question. At a glance, it is clear that money and finances are some of the biggest concerns faced by respondents.

¹ Note that the Y-Axis only goes up to 60% for better visualization.

Figure 4. Most Impactful Challenge by Age Category



Respondents were also asked to select from a set of answer choices about the challenges that impact them the most, and prompted to select up to three choices. Healthcare and economic security were tied for the top choice, with 48%, each. The percentage of respondents who chose economic security was notably different between age groups, with 49% of women aged 25 and over, compared to 32% of women aged 18 to 24. Women aged 25 and older also chose healthcare at a slightly higher rate than the 18-to-24 group, at 49% and 43%. The younger age group had more respondents (37%) cite violence against women than women aged 25 and over (22%). Younger women were also more concerned with workplace issues than the 25-and-older group, along with access to leadership roles for women, and access to higher education or career training.

Figure 5. Most Impactful Challenge by Region

What do you consider to be the most impactful challenge or problem that you face in your daily life?

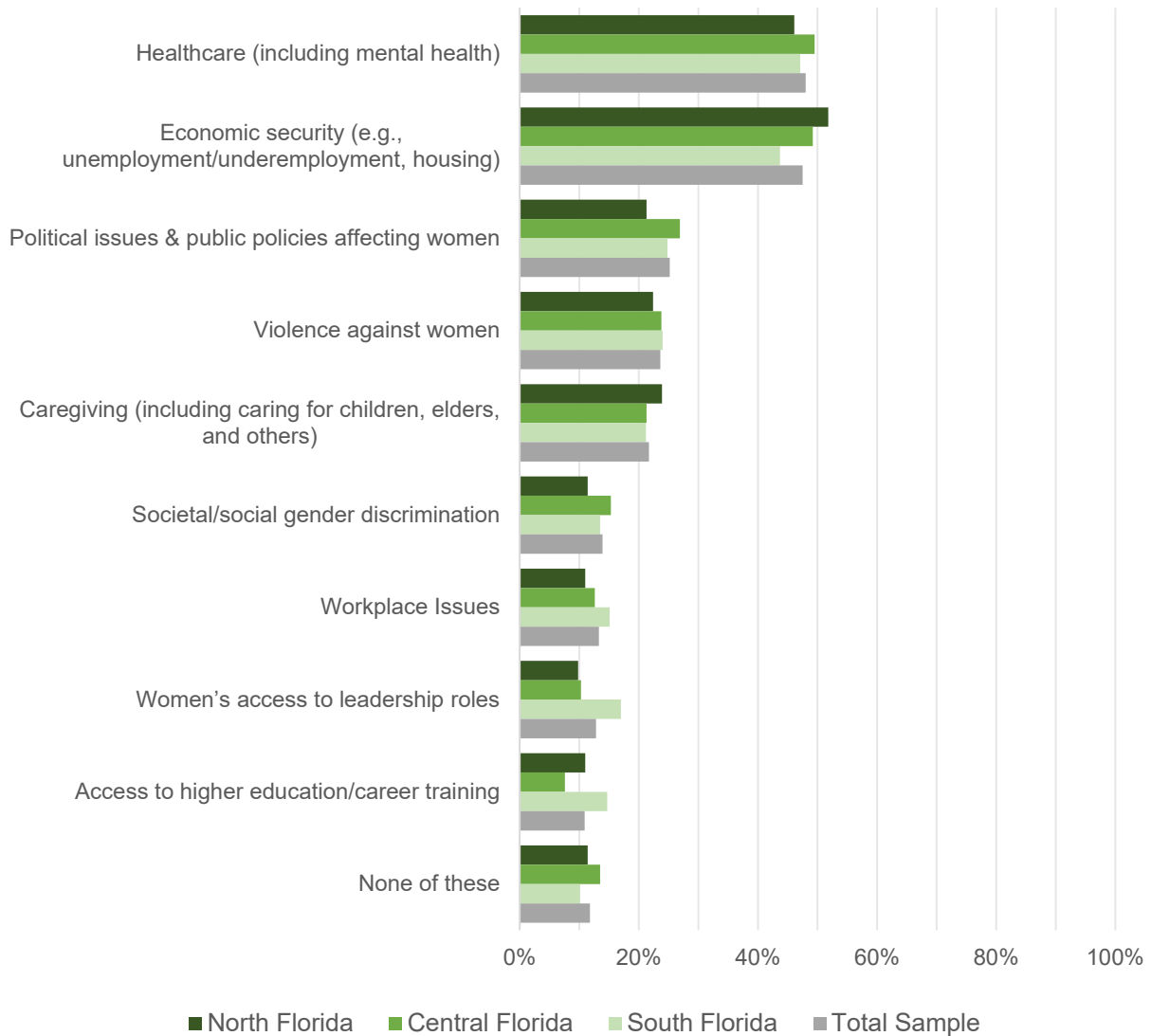


Figure 5, above, shows respondents' most impactful challenge, broken down by geographical region. The most notable differences are in economic security, with 52% North Florida respondents choosing this as their biggest challenge, compared to 44% in South Florida. Conversely, a greater percentage of South Floridians selected women's access to leadership roles (17%) than respondents from North or Central Florida (with 10%, each). Additionally, access to higher education and career training was more important to North and South Florida (11% and 15%, respectively) compared to Central Florida at 8%.

Figure 6. Most Impactful Challenge by Annual Household Income

What do you consider to be the most impactful challenge or problem that you face in your daily life?

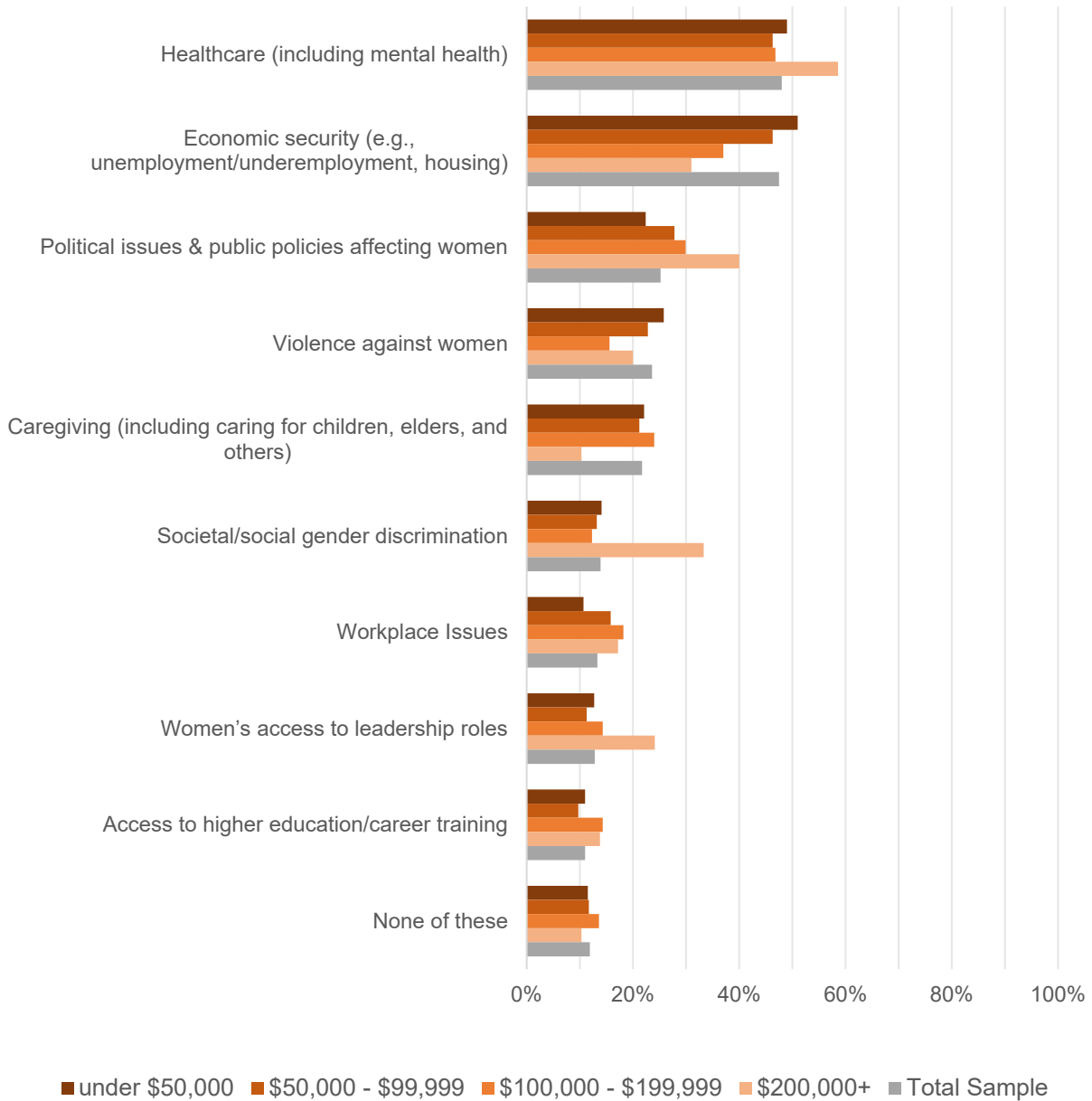
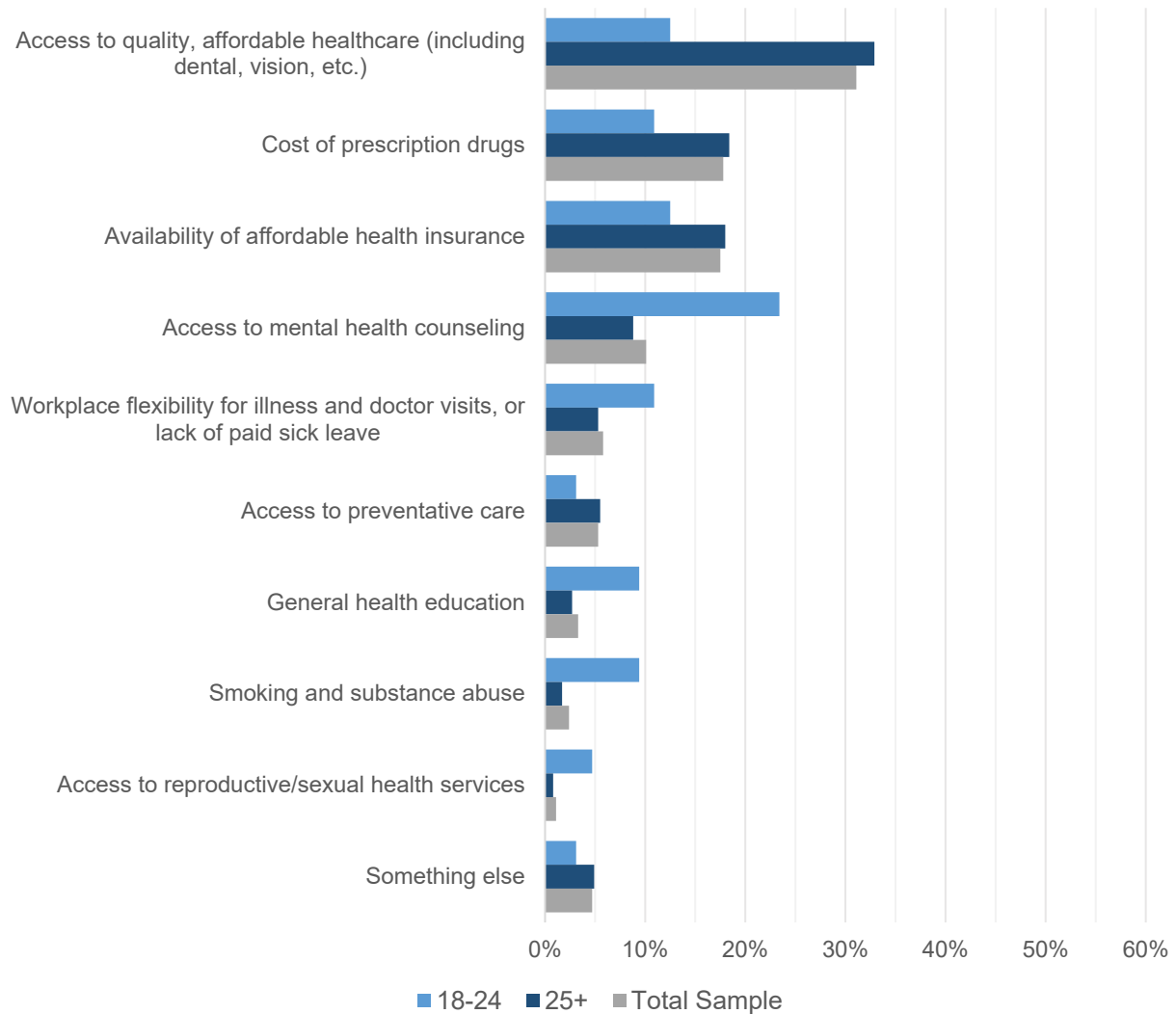


Figure 6 displays the most impactful challenge, broken down by annual household income. Respondents who earned less than \$50,000 per year were most concerned with economic security, with 51%. Respondents making between fifty and a hundred thousand dollars were tied between healthcare and economic security (46%). Respondents earning between \$100,000 and \$199,999 (47%) as well as respondents earning more than \$200,000 (59%) were most concerned with healthcare. Only 10% of the richest respondents chose caregiving as their greatest challenge, 12 percentage points lower than the average, while 33% of them chose societal/social gender discrimination, compared with only 14% of the total sample.

Figure 7. Healthcare Challenges by Age Category²

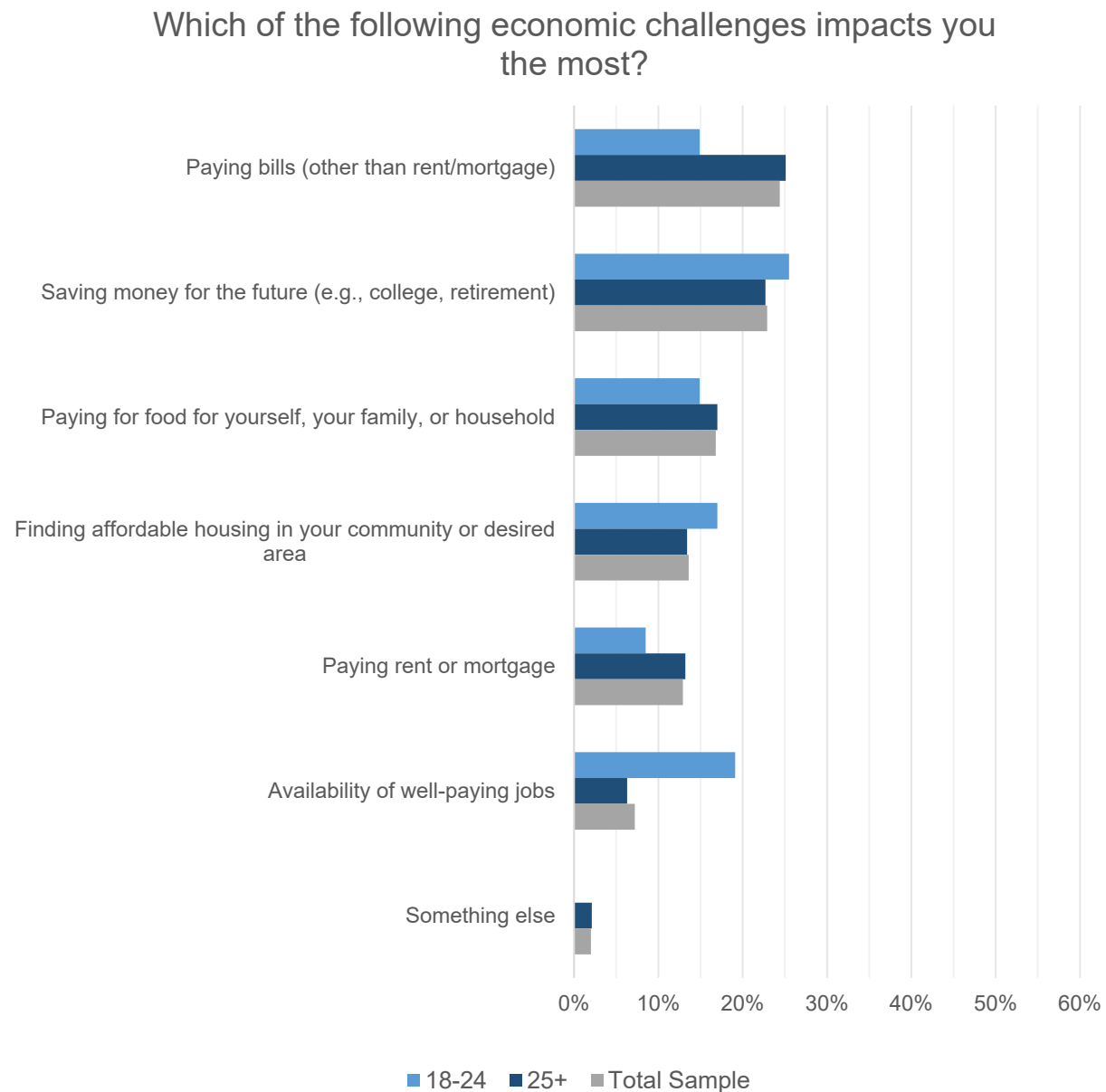
Which of the following health-related challenges impacts you the most?



Respondents who chose healthcare as their greatest challenge were then asked what health-related challenge impacted them the most. The results are broken down by age in Figure 7, above. Thirty-one percent of the total sample selected access to quality, affordable healthcare as their biggest challenge, but only 13% of women aged 18-24 chose this response. Younger women were most concerned (23%) with access to mental health counseling, though this was only chosen as the biggest challenge by 10% of the total sample. Additionally, younger women were 6 points more likely to choose general health education and 7 points more likely to choose smoking and substance abuse than older respondents were.

² Note that the Y-Axis only goes up to 60% for better visualization.

Figure 8. Economic Challenges by Age Category³

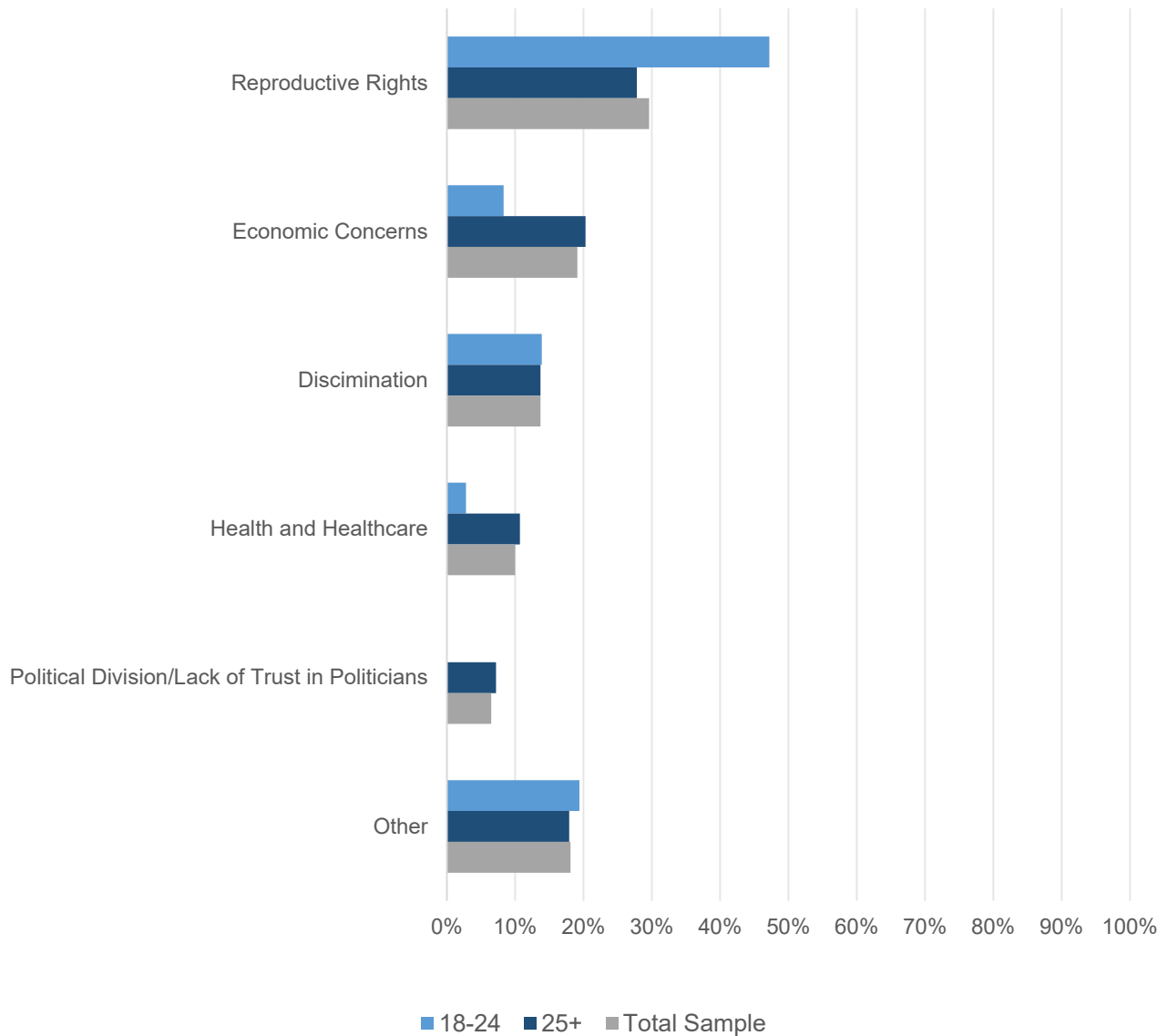


Respondents who chose the economy as their greatest challenge were then asked what economic challenge impacted them the most. Paying bills was the top choice with 24% and saving money for the future was second place with 23%. While younger women were 10 percentage points less likely to choose paying bills than women aged 25+, those aged 18-24 were 13 percentage points more likely to cite availability of well-paying jobs as their greatest economic challenge than older women were, and 12 percentage points higher than the total sample on the same question.

³ Note that the Y-Axis only goes up to 60% for better visualization.

Figure 9. Public Policy by Age Category

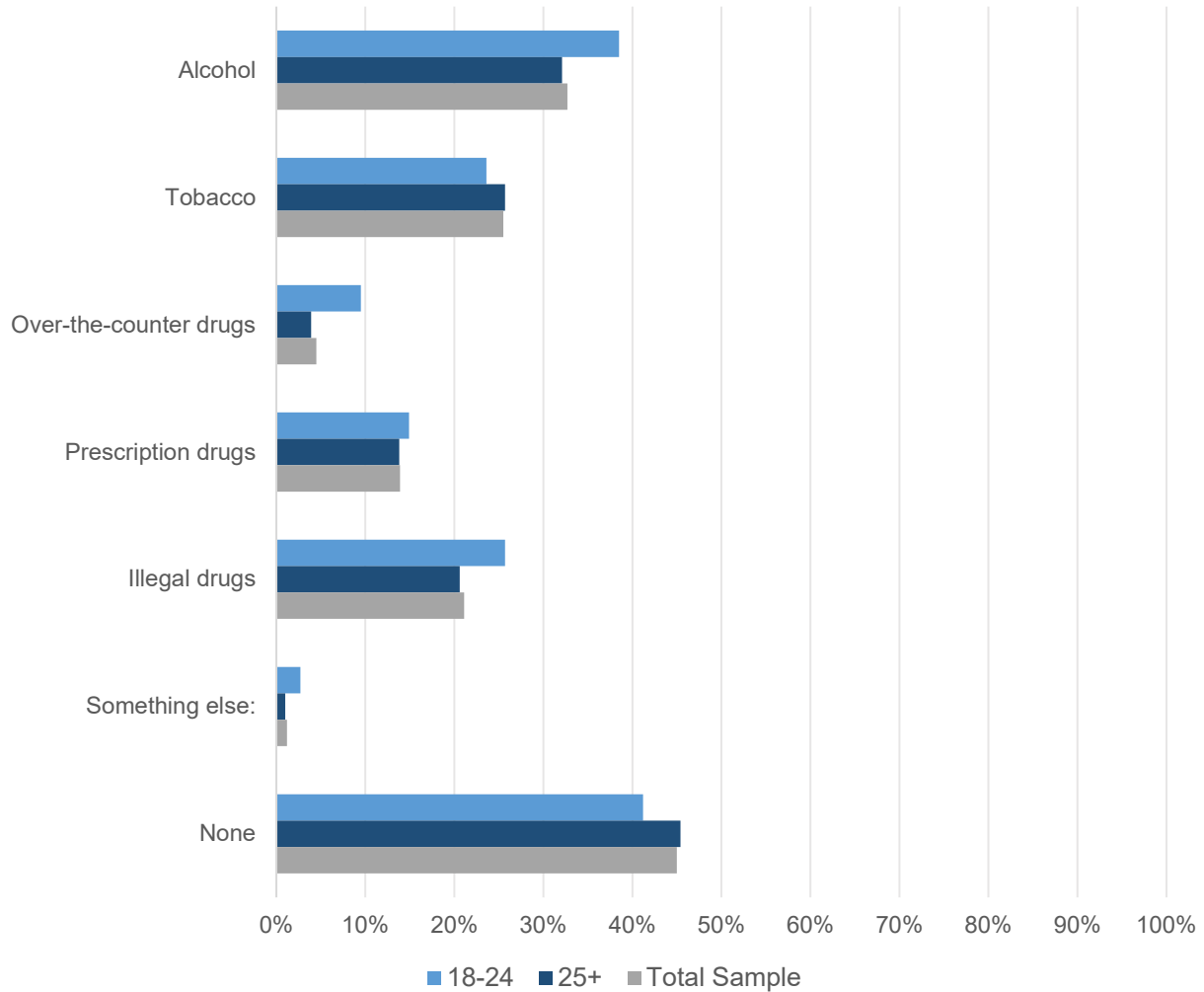
Please specify the political issues and/or public policies you feel most impacted by (Recoded)



Respondents who cited political issues or public policies as their most impactful challenge were then asked to specify what issue impacted them the most in an open-ended question. Their responses were then recoded into 6 different categories, displayed above, in Figure 9. Reproductive rights were the top concern mentioned in responses, with 30% of the total sample mentioning this in their answer. This was even more prevalent among respondents aged 18 to 24, with 47%. Women aged 25 and older were more concerned than the younger age group about economic issues, access to healthcare, and political division/lack of trust in politicians.

Figure 10. Substance Abuse Challenges by Age Category

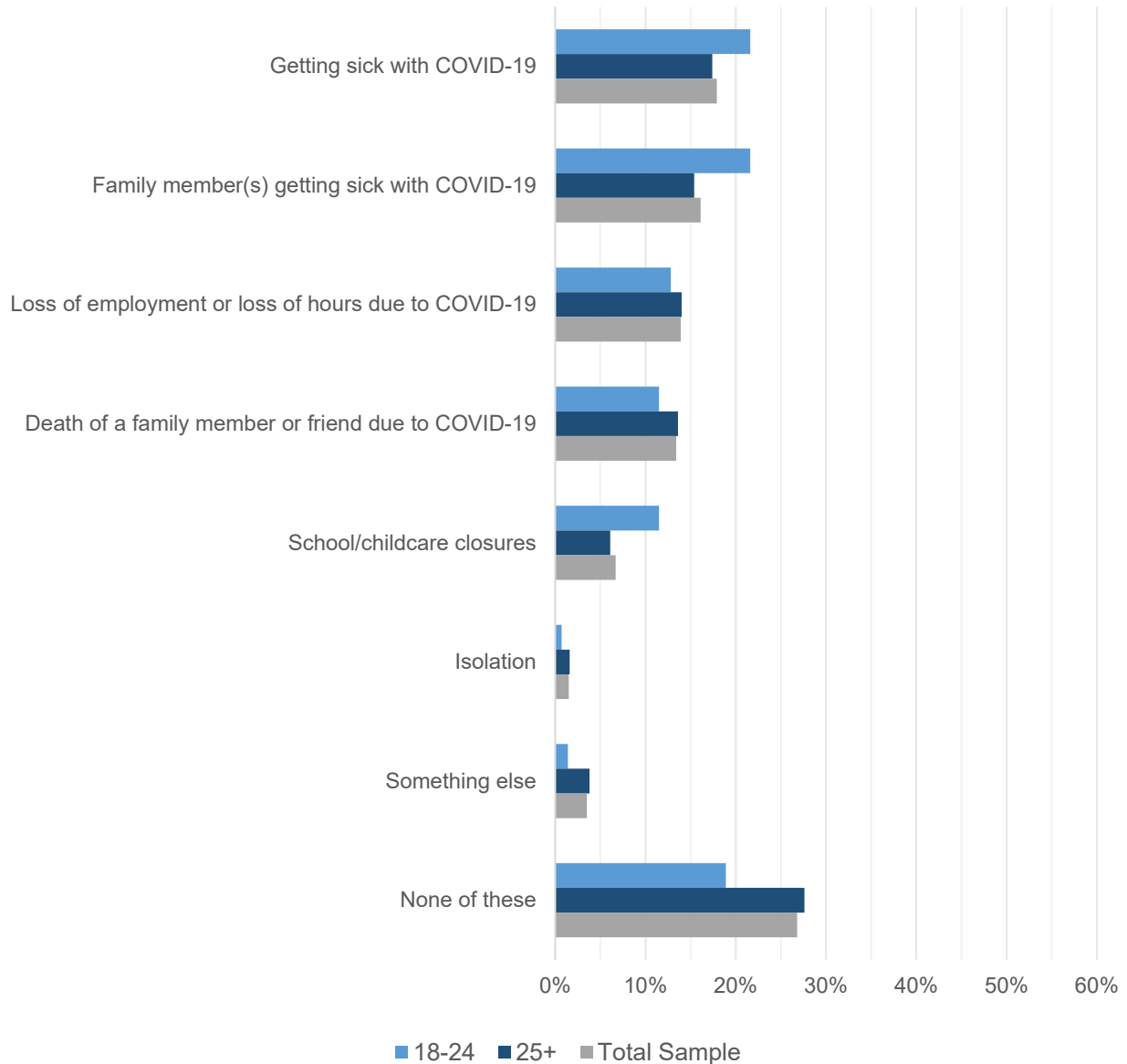
Which of the following substance abuse issues have affected you or someone close to you?
(Select all that apply)



All respondents were asked about substance abuse issues that affect them or someone they know. Respondents were asked to select all the choices that apply. Alcohol was the top choice, with 33% of the total sample choosing that option, while tobacco came in second at 26%. Women aged 18 to 24 were six percentage points higher in over-the-counter drugs than those aged 25 or older. Tobacco abuse was slightly higher among the older age group. Forty-five percent of the total sample said they didn't know anyone with a substance abuse problem, which was slightly lower among the younger age group (41%).

Figure 11. COVID-19 Impact by Age Category⁴

Which of the following issues related to COVID-19 has impacted you the most?

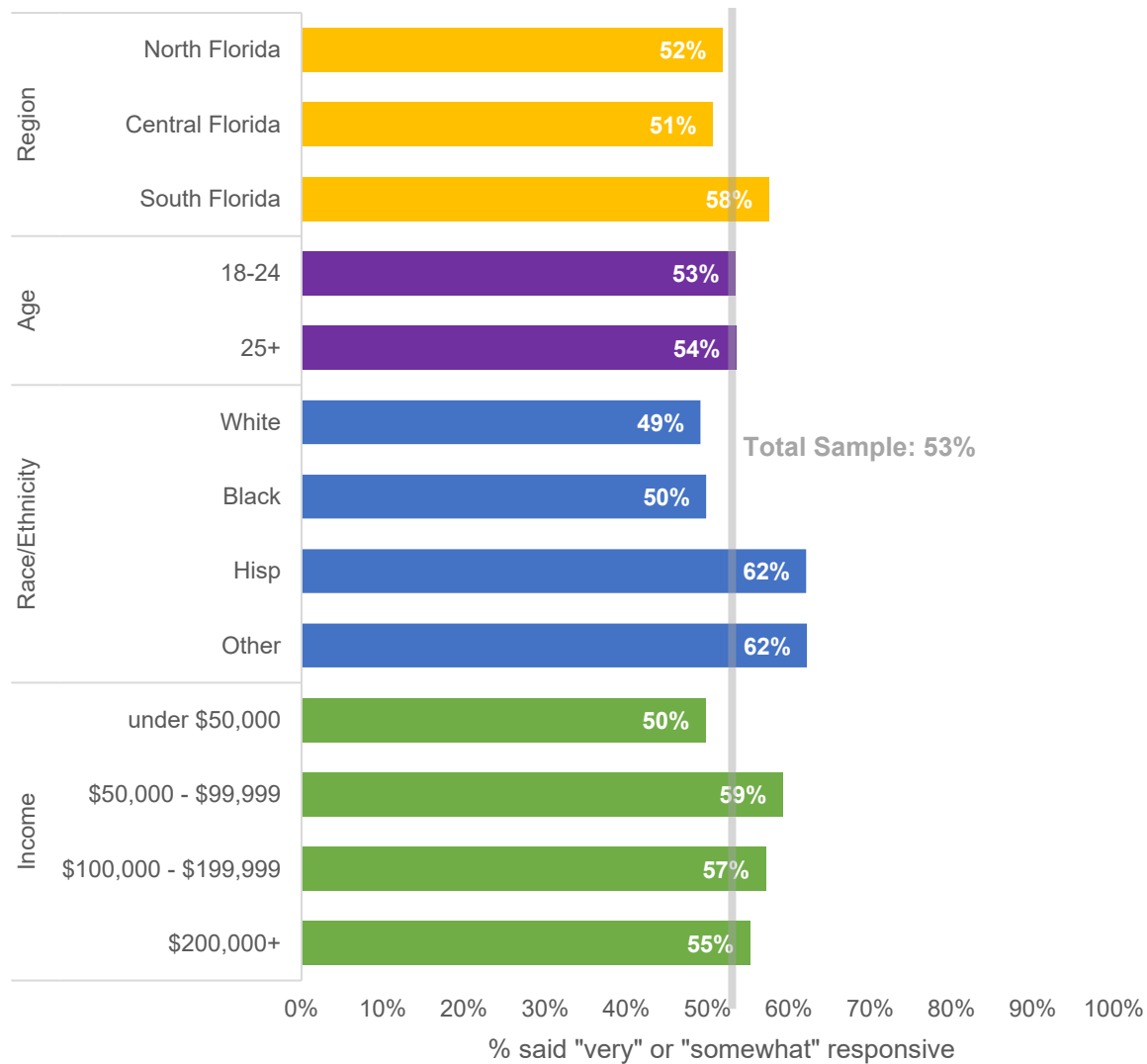


Respondents were also asked what issues related to COVID-19 had impacted them the most. Getting sick with COVID was the top choice with 18% of the total sample, while family member(s) getting COVID came in second with 16%. Younger women were more often concerned about themselves or a family member getting COVID than their older counterparts. A greater percentage of women aged 25 and over said none of these COVID-related issues affected them than those aged 18 to 14, with 28% and 19%, respectively.

⁴ Note that the Y-Axis only goes up to 60% for better visualization.

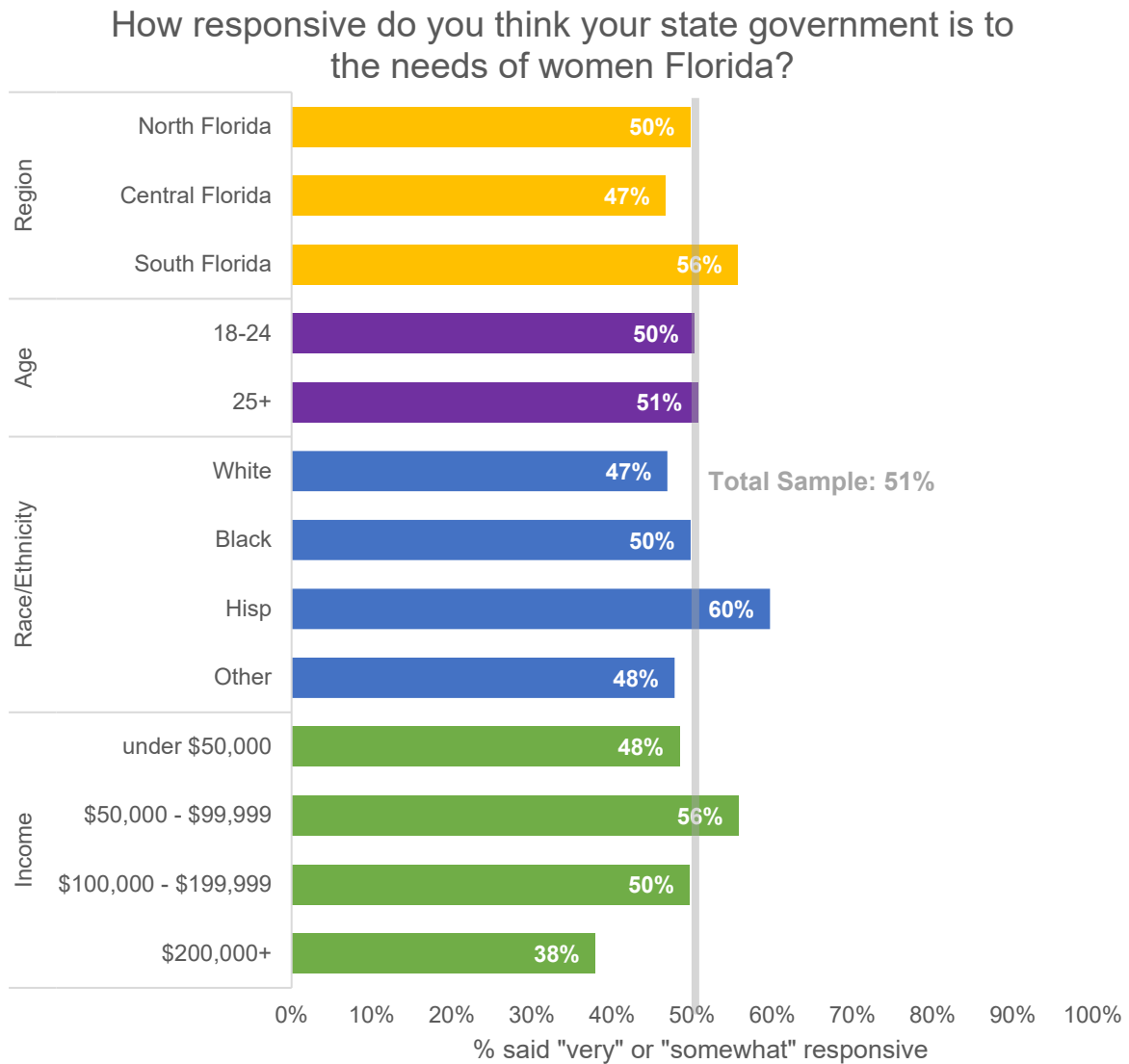
Figure 12. Local Government Responsiveness by Select Demographics

How responsive do you think your local government is to the needs of women in your city or county?



When asked about the responsiveness of local government to the needs of women, 53% of respondents said it was either very responsive, or somewhat responsive. Figure 12 shows the responses to this question, broken down by select demographics. Respondents in South Florida thought local government was more responsive than in North or Central Florida, with 58% indicating they are at least somewhat responsive. Hispanic and Latino respondents, as well as those who marked their race as “other,” were the groups with the greatest percentage who think local government is at least somewhat responsive to the needs of women, at 62% each.

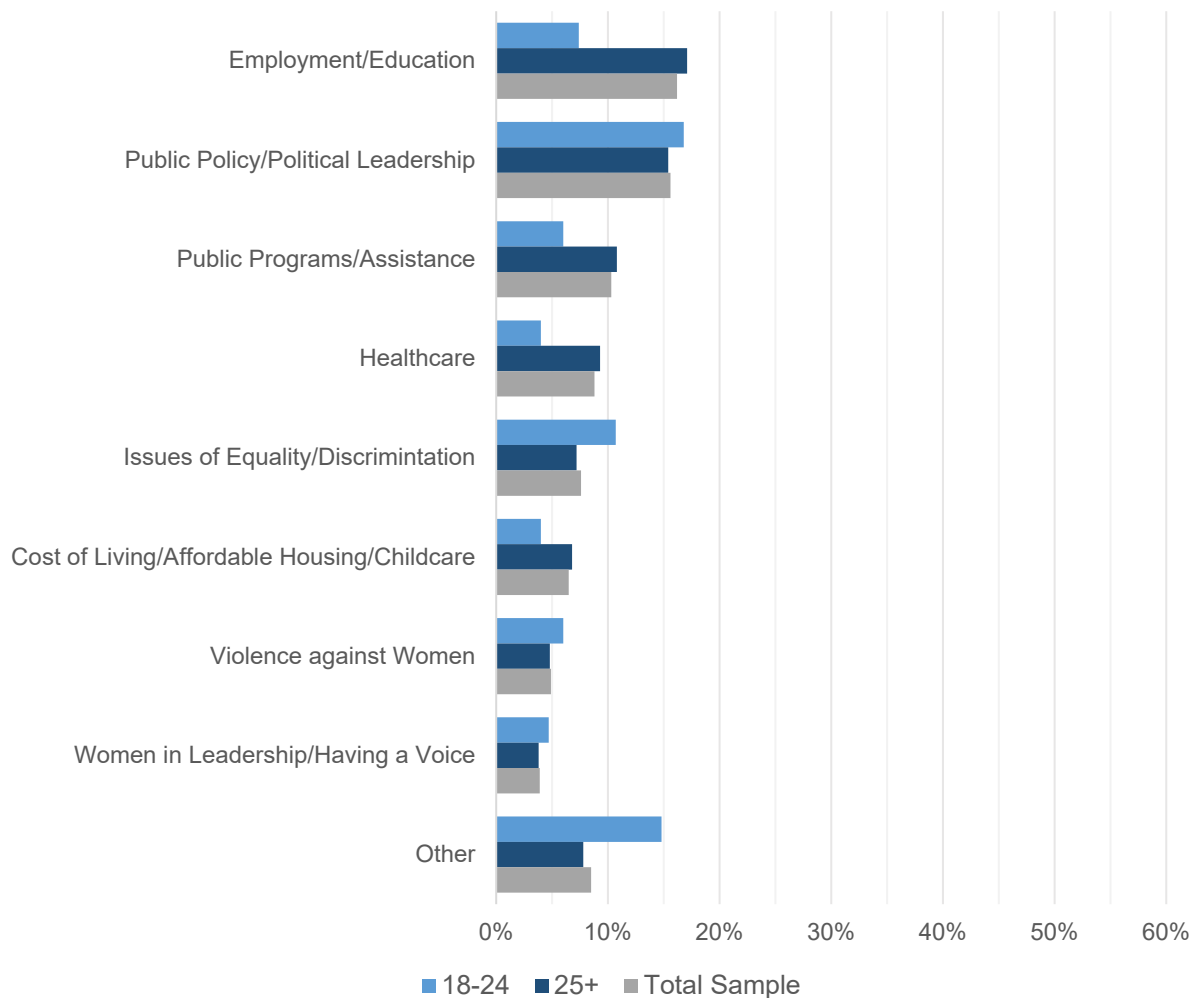
Figure 13. State Government Responsiveness by Select Demographics



When respondents were asked about the responsiveness of state government to meeting the needs of women in Florida, 51% of respondents said that state government was somewhat or very responsive. Figure 13 breaks down the responses to this question by select demographics. Of the respondents in South Florida, 56% thought state government was responsive, whereas 50% of respondents in North Florida and 47% of respondents in Central Florida thought state government was responsive. Hispanics, at 60% thought state government was responsive more than all other races, with Whites at 47%, Blacks at 50%, and others at 48%. Broken down by income, those earning \$50,000 to \$99,000 thought that state government was responsive more than any other bracket, at 56%. Of respondents earning under \$50,000, 48% thought state government was responsive. Of those earning over \$200,000, only 38% thought that local government was responsive.

Figure 14. Positive Change by Age Category⁵

If there was one change that could be made in your community that would result in the greatest positive impact on women, what would it be? (recoded)

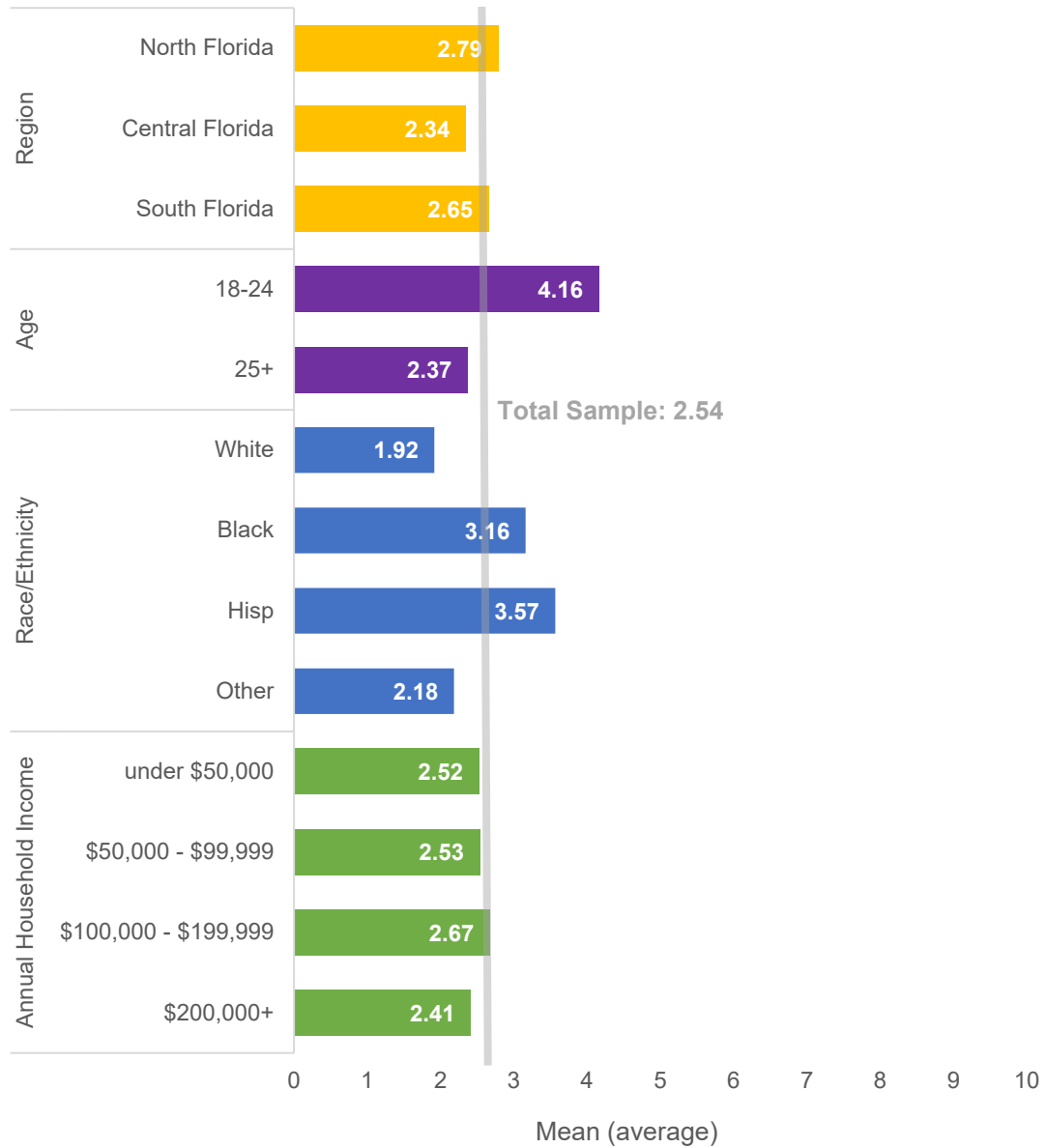


In an open-ended question, respondents were asked what change could be made in their communities that would result in the most positive change impacting women. The responses were recoded into the categories listed in Figure 14 above, broken down by age category. Of the total sample, 16.2% of respondents indicated a change relating to employment and education, including equal pay for women, and greater access to higher education. Just about half a percentage point behind is public policy and political leadership, at 15.6%. This is the most common theme among 18 to 24-year-olds, with 17%.

⁵ Note that the Y-Axis only goes up to 60% for better visualization.

Figure 15. Mean Awareness of FCSW by Select Demographics

On a scale from 0 to 10, how familiar are you with the Florida Commission on the Status of Women?



Respondents were asked how familiar they were with the Florida Commission on the Status of Women on a scale from one to ten. Figure 15 shows the mean (or average) scores, broken down by select demographics. The group least familiar with the FCSW were White respondents, with a mean of 1.92. The 18 to 24-year-old age category was the most familiar, with a mean of 4.16. Broken down by race and ethnicity, respondents of Hispanic or Latino ethnic origin were the most familiar with 3.57, followed closely by Black respondents with a mean of 3.16. When broken down by region, North Florida was most familiar, closely followed by South Florida, with an average of 2.79.

Appendix I. Survey Results

Percentages located in crosstabulations on the following pages consist of weighted data, while observations are raw, unweighted totals. For more information about weighting, see the “Methodology” section.

What do you consider to be the most impactful challenge or problem that you face in your daily life? (Recorded from open-ended responses)

[All respondents]

	Total n=1,500	Region			College		Race/Ethnicity				Age					
		North n=301	Central n=761	South n=438	No n=1031	Yes n=468	White n=919	AfrAm/ Black n=214	Hisp n=311	Other n=54	18-24 n=302	25-34 n=267	35-44 n=270	45-54 n=203	55-64 n=241	65+ n=217
Health/Healthcare	22%	23%	22%	22%	22%	23%	28%	15%	15%	23%	18%	11%	13%	20%	28%	33%
	308	64	159	85	215	93	217	31	49	11	56	32	34	46	69	71
Economy/Finances	34%	35%	37%	30%	35%	31%	35%	36%	29%	38%	21%	32%	40%	38%	35%	33%
	503	100	276	127	349	154	330	71	83	19	67	90	113	77	84	72
Employment/School	5%	6%	4%	5%	5%	4%	3%	11%	6%	6%	11%	8%	9%	4%	4%	-
	92	20	38	34	68	24	40	25	23	3	34	20	20	9	9	0
Discrimination/Harrasment	3%	2%	3%	2%	2%	3%	2%	3%	4%	6%	5%	3%	2%	3%	3%	2%
	42	6	26	10	27	15	21	6	12	3	16	6	7	4	6	3
Caregiving and Family	7%	6%	5%	9%	6%	8%	7%	4%	8%	1%	3%	7%	7%	8%	4%	8%
	91	21	37	33	57	34	60	9	21	1	12	19	20	12	11	17
Time/energy/motivation	7%	8%	8%	6%	6%	9%	8%	4%	9%	4%	9%	8%	7%	9%	6%	7%
	122	30	64	28	75	47	82	10	27	2	27	25	24	17	15	14
Transportation	3%	1%	4%	2%	3%	2%	3%	1%	2%	-	3%	2%	1%	2%	3%	3%
	41	3	26	12	32	9	27	5	9	0	10	6	3	6	8	8
Mental health/stress	5%	4%	5%	6%	5%	5%	4%	6%	6%	7%	6%	6%	5%	8%	4%	3%
	78	13	37	28	56	22	42	12	20	4	16	16	18	14	8	6
Other	9%	9%	7%	11%	9%	9%	6%	10%	14%	8%	11%	14%	9%	5%	8%	8%
	122	24	49	49	82	40	54	22	41	5	32	30	18	10	18	14
Don't Know/Refusal	6%	7%	6%	6%	7%	5%	5%	10%	7%	8%	12%	9%	6%	4%	5%	5%
	101	20	49	32	70	30	46	23	26	6	32	23	13	8	13	12

Which of the following challenges impacts you the most? (choose up to three)*

[All respondents]

	Total n=1,500	Region			College		Race/Ethnicity				Age					
		North n=301	Central n=761	South n=438	No n=1031	Yes n=468	White n=919	AfrAm/ Black n=214	Hisp n=311	Other n=54	18-24 n=302	25-34 n=267	35-44 n=270	45-54 n=203	55-64 n=241	65+ n=217
Economic security (e.g., unemployment/underemployment, housing)	48%	52%	49%	44%	50%	44%	45%	49%	50%	54%	32%	50%	57%	61%	53%	36%
	707	146	372	189	492	215	438	94	144	31	97	137	147	119	129	78
Caregiving (including caring for children, elders, and others)	22%	24%	21%	21%	22%	21%	22%	22%	23%	16%	18%	28%	27%	21%	23%	17%
	336	74	167	95	234	102	206	47	72	9	52	74	73	42	56	39
Healthcare	48%	46%	50%	47%	48%	49%	50%	46%	43%	51%	43%	43%	49%	5<1%	53%	48%
	713	140	368	205	486	227	451	96	136	30	126	118	126	107	132	104
Women's access to leadership roles	13%	10%	10%	17%	11%	16%	7%	23%	19%	11%	26%	22%	11%	11%	9%	7%
	208	37	98	73	132	76	86	52	62	8	81	49	31	17	17	13
Access to higher education/career training	11%	11%	8%	15%	11%	11%	5%	19%	19%	11%	25%	18%	16%	13%	5%	2%
	187	41	75	71	134	53	72	45	62	8	70	45	39	20	11	2
Workplace issues	13%	11%	13%	15%	12%	15%	9%	19%	18%	13%	23%	23%	15%	22%	9%	1%
	234	41	119	74	154	80	117	49	60	7	72	61	37	42	19	3
Societal/social gender discrimination	14%	11%	15%	14%	13%	15%	11%	16%	17%	2<1%	23%	22%	11%	10%	10%	12%
	227	38	126	63	155	72	123	36	59	9	73	54	34	18	24	24
Political issues and public policies affecting women	25%	21%	27%	25%	22%	32%	26%	23%	24%	29%	26%	28%	19%	20%	23%	31%
	371	66	197	108	233	138	233	45	77	16	78	77	59	43	50	64
Violence against women	24%	22%	24%	24%	26%	19%	20%	33%	27%	14%	37%	29%	17%	21%	21%	22%
	367	71	186	110	280	87	193	70	95	9	110	73	45	41	52	46
None of these	12%	11%	14%	10%	13%	9%	14%	9%	8%	16%	11%	10%	8%	8%	9%	20%
	165	30	93	42	124	40	111	20	27	7	33	24	21	17	26	44
Don't know/Refusal	-	-	-	-	-	-	-	-	-	-	-	-	-	-	-	-
	0	0	0	0	0	0	0	0	0	0	0	0	0	0	0	0

*Note. Columns may add up to more than 100% for this select-all question.

Which of the following economic challenges impacts you the most?

[Respondents who Chose "Economic Security"]

	Total n=707	Region			College		Race/Ethnicity				Age					
		North n=146	Central n=372	South n=189	No n=492	Yes n=215	White n=438	AfrAm/ Black n=94	Hisp n=144	Other n=31	18-24 n=97	25-34 n=137	35-44 n=147	45-54 n=119	55-64 n=129	65+ n=78
Availability of well-paying jobs	7%	9%	7%	6%	7%	8%	6%	12%	8%	2%	19%	10%	7%	9%	5%	1%
	63	18	32	13	44	19	33	15	14	1	17	14	13	11	7	1
Paying rent or mortgage	13%	13%	14%	12%	13%	12%	14%	14%	12%	11%	9%	21%	15%	11%	16%	5%
	102	18	57	27	73	29	68	13	17	4	8	28	23	16	23	4
Finding affordable housing in your community or desired area	14%	11%	14%	15%	14%	12%	11%	17%	14%	23%	17%	15%	13%	20%	10%	9%
	93	16	48	29	66	27	51	15	20	7	14	20	19	21	12	7
Paying bills (other than rent/mortgage)	25%	30%	22%	25%	24%	25%	25%	24%	25%	19%	15%	24%	22%	24%	25%	29%
	161	40	75	46	114	47	99	22	34	6	14	33	32	27	31	24
Paying for food for yourself, your family, or household	17%	14%	19%	16%	19%	13%	18%	12%	18%	15%	15%	9%	16%	13%	22%	24%
	113	24	61	28	86	27	75	11	23	4	17	13	23	14	28	18
Saving money for the future (e.g., college, retirement)	23%	22%	23%	23%	21%	28%	23%	22%	22%	30%	26%	21%	25%	22%	19%	26%
	161	28	90	43	97	64	100	18	34	9	26	28	34	29	25	19
Something else	2%	2%	2%	2%	2%	2%	4%	-	1%	-	<1%	-	2%	1%	2%	6%
	12	2	7	3	10	2	11	0	1	0	1	0	2	1	3	5
Don't know/Refusal	<1%	-	1%	-	<1%	-	<1%	-	1%	-	<1%	1%	-	-	-	-
	2	0	2	0	2	0	1	0	1	0	0	1	1	0	0	0

Thinking of the economic challenges you face, would you say that COVID-19...

[Respondents who Chose "Economic Security"]

	Total n=707	Region			College		Race/Ethnicity				Age					
		North n=146	Central n=372	South n=189	No n=492	Yes n=215	White n=438	AfrAm/ Black n=94	Hisp n=144	Other n=31	18-24 n=97	25-34 n=137	35-44 n=147	45-54 n=119	55-64 n=129	65+ n=78
Has been the root cause of your challenges	26%	25%	25%	28%	26%	25%	19%	36%	34%	17%	26%	41%	30%	20%	24%	18%
	181	43	87	51	129	52	88	36	53	4	22	50	44	24	28	13
Not the root cause, but exacerbated your challenges	49%	45%	54%	46%	48%	52%	54%	42%	46%	46%	68%	42%	46%	55%	53%	44%
	379	66	219	94	260	119	256	40	67	16	67	67	71	63	75	36
Is not related to your challenges	23%	25%	20%	24%	24%	20%	25%	18%	18%	35%	6%	15%	20%	23%	22%	36%
	135	32	62	41	95	40	89	15	21	10	8	18	28	30	24	27
Don't know/Refusal	2%	5%	1%	2%	2%	3%	1%	4%	2%	2%	-	3%	4%	2%	2%	2%
	12	5	4	3	8	4	5	3	3	1	0	2	4	2	2	2

Which of the following caregiving challenges impacts you the most?

[Respondents who Chose "Caregiving"]

	Total n=336	Region			College		Race/Ethnicity				Age					
		North n=74	Central n=167	South n=95	No n=234	Yes n=102	White n=206	AfrAm/ Black n=47	Hisp n=72	Other n=9	18-24 n=52	25-34 n=74	35-44 n=73	45-54 n=42	55-64 n=56	65+ n=39
access to social services related to caregiving	9%	8%	9%	10%	8%	11%	12%	8%	6%	-	8%	5%	2%	12%	11%	17%
	27	6	12	9	16	11	20	4	3	0	4	3	2	4	7	7
Workplace/social support for breastfeeding	2%	2%	1%	2%	2%	1%	1%	-	3%	15%	8%	3%	2%	-	-	-
	6	2	1	3	5	1	1	0	3	2	3	2	1	0	0	0
Workplace flexibility for family needs	12%	10%	13%	11%	10%	14%	9%	10%	17%	15%	12%	23%	14%	8%	4%	7%
	43	8	25	10	26	17	26	5	11	1	8	15	11	3	3	3
Caring for elders, parents, or extended family members	35%	34%	35%	36%	34%	38%	38%	31%	33%	15%	23%	15%	25%	39%	60%	44%
	105	23	50	32	72	33	68	13	21	1	11	11	17	18	31	17
Lack of convenient/affordable childcare options	10%	8%	11%	8%	11%	8%	7%	10%	12%	23%	12%	20%	18%	10%	2%	-
	38	6	23	9	28	10	21	5	10	2	5	17	11	4	1	0
Single parenting	8%	10%	9%	7%	12%	3%	6%	14%	9%	8%	15%	12%	18%	6%	4%	-
	37	10	19	8	32	5	20	9	7	1	10	9	13	2	3	0
Parenting skills and resources	8%	10%	6%	7%	8%	7%	7%	8%	10%	-	8%	6%	9%	8%	9%	7%
	23	6	10	7	16	7	12	3	8	0	3	4	6	4	3	3
Not being able to spend enough time with children (or other persons being cared for)	10%	13%	11%	7%	9%	10%	8%	14%	9%	15%	4%	15%	12%	8%	7%	7%
	33	10	17	6	22	11	19	6	7	1	3	11	9	3	4	3
Something else	6%	5%	4%	8%	6%	5%	8%	4%	1%	8%	12%	2%	2%	8%	5%	9%
	20	3	8	9	16	4	15	2	2	1	5	2	2	4	4	3
Don't know/Refusal	2%	-	1%	3%	1%	4%	4%	-	-	-	-	-	<1%	-	-	9%
	4	0	2	2	1	3	4	0	0	0	0	0	1	0	0	3

Which of the following childcare challenges impacts you the most?

[Respondents who Chose "Caregiving"]

	Total n=336	Region			College		Race/Ethnicity				Age					
		North n=74	Central n=167	South n=95	No n=234	Yes n=102	White n=206	AfrAm/ Black n=47	Hisp n=72	Other n=9	18-24 n=52	25-34 n=74	35-44 n=73	45-54 n=42	55-64 n=56	65+ n=39
Available care for sick children	5%	10%	5%	2%	5%	5%	4%	4%	9%	-	7%	5%	5%	10%	4%	2%
Quality childcare with trusted caregivers and preferred activities	13%	10%	13%	13%	13%	13%	8%	27%	14%	8%	15%	23%	10%	12%	18%	2%
Childcare location near home or work	4%	3%	6%	2%	5%	2%	3%	2%	7%	-	7%	9%	3%	-	4%	-
Available "after-hours" care for children, extended care hours	6%	2%	6%	8%	7%	6%	4%	14%	6%	17%	15%	12%	5%	10%	2%	-
Cost of childcare	22%	25%	20%	22%	22%	22%	14%	25%	33%	30%	35%	39%	22%	7%	3%	
Something Else	3%	3%	4%	2%	3%	3%	2%	1%	17%	-	-	5%	4%	5%	3%	
Not applicable	46%	43%	44%	50%	44%	5<1%	64%	22%	28%	25%	22%	14%	27%	43%	61%	91%
Don't know/Refusal	2%	5%	1%	1%	2%	1%	1%	4%	2%	-	4%	3%	5%	-	-	-

Which of the following health-related challenges impacts you the most?

[Respondents who Chose "Healthcare"]

	Total n=713	Region			College		Race/Ethnicity				Age					
		North n=140	Central n=368	South n=205	No n=486	Yes n=227	White n=451	AfrAm/ Black n=96	Hisp n=136	Other n=30	18-24 n=126	25-34 n=118	35-44 n=126	45-54 n=107	55-64 n=132	65+ n=104
Access to quality, affordable healthcare (including dental, vision, etc.)	31%	34%	32%	29%	29%	35%	33%	22%	30%	37%	13%	32%	30%	36%	30%	35%
Availability of affordable health insurance	18%	17%	18%	18%	18%	16%	13%	32%	17%	26%	13%	21%	21%	24%	17%	11%
Access to reproductive/ sexual health services	1%	1%	1%	1%	2%	-	1%	1%	2%	2%	5%	3%	-	1%	1%	-
Access to preventative care	5%	5%	5%	6%	5%	5%	7%	4%	5%	-	3%	1%	5%	6%	7%	7%
General health education	3%	3%	4%	3%	4%	2%	3%	6%	4%	2%	9%	5%	5%	3%	1%	2%
Smoking and substance abuse	2%	3%	2%	2%	3%	1%	3%	1%	2%	2%	9%	2%	2%	-	3%	2%
Cost of prescription drugs	18%	15%	16%	22%	16%	21%	22%	14%	14%	2%	11%	8%	12%	9%	20%	33%
Access to mental health counseling	10%	11%	9%	12%	10%	11%	9%	8%	14%	13%	23%	13%	8%	15%	9%	3%
Workplace flexibility for illness and doctor visits, or lack of paid sick leave	6%	7%	6%	5%	7%	4%	3%	8%	11%	7%	11%	11%	12%	3%	5%	-
Something else	5%	5%	6%	3%	5%	4%	6%	3%	1%	9%	3%	4%	6%	3%	5%	6%
Don't know/Refusal	<1%	<1%	1%	1%	1%	<1%	1%	3%	-	-	-	1%	-	-	3%	1%

Which of the following health insurance challenges impacts you the most?

[Respondents who Chose "Healthcare"]

	Total n=713	Region			College		Race/Ethnicity				Age					
		North n=140	Central n=368	South n=205	No n=486	Yes n=227	White n=451	AfrAm/ Black n=96	Hisp n=136	Other n=30	18-24 n=126	25-34 n=118	35-44 n=126	45-54 n=107	55-64 n=132	65+ n=104
Cost of health insurance	43%	40%	41%	45%	43%	42%	38%	51%	49%	39%	29%	50%	44%	5<1%	46%	36%
No or inadequate benefits through employer	4%	6%	4%	4%	6%	2%	3%	7%	7%	-	6%	9%	6%	6%	5%	-
Navigating the health insurance system	14%	19%	12%	15%	12%	17%	17%	11%	8%	20%	13%	10%	11%	11%	14%	20%
Finding a provider covered by insurance plan	20%	21%	20%	18%	20%	19%	21%	18%	21%	9%	22%	18%	20%	24%	19%	17%
Lack of coverage for vital health services/procedures	12%	11%	13%	10%	11%	13%	12%	9%	12%	15%	19%	9%	12%	5%	8%	17%
Something else	5%	2%	5%	6%	5%	5%	6%	2%	3%	4%	6%	5%	2%	3%	3%	8%
Don't know/Refusal	3%	3%	4%	2%	4%	2%	3%	3%	1%	13%	5%	-	6%	2%	4%	3%

Which of the following forms of societal or social gender discrimination impacts you the most?

[Respondents who chose "Societal/social gender discrimination"]

	Total n=227	Region			College		Race/Ethnicity				Age					
		North n=38	Central n=126	South n=63	No n=155	Yes n=72	White n=123	AfrAm/ Black n=36	Hisp n=59	Other n=9	18-24 n=73	25-34 n=54	35-44 n=34	45-54 n=18	55-64 n=24	65+ n=24
Being treated differently than male counterparts	13%	16%	11%	15%	16%	10%	16%	11%	11%	18%	14%	14%	19%	8%	12%	10%
	34	5	20	9	24	10	22	5	5	2	12	7	8	1	3	3
Feeling societal pressure to conform to traditional gender roles	11%	13%	12%	10%	10%	12%	15%	3%	11%	12%	8%	20%	12%	8%	8%	8%
	27	5	15	7	17	10	17	1	7	2	5	11	4	2	3	2
Feeling societal pressure to adhere to physical beauty standards	16%	19%	15%	15%	16%	16%	18%	11%	18%	-	17%	12%	15%	28%	20%	10%
	39	7	23	9	26	13	22	5	12	0	14	6	5	5	6	3
Stress or pressure from social media	9%	7%	11%	6%	10%	6%	8%	3%	15%	-	14%	10%	12%	-	16%	2%
	23	3	13	7	17	6	12	1	10	0	7	8	4	0	3	1
Unwanted sexual remarks or advances from people you know (e.g., friends, coworkers)	6%	10%	7%	4%	7%	5%	10%	8%	2%	-	8%	6%	8%	8%	4%	8%
	18	4	10	4	13	5	12	4	2	0	7	4	2	2	1	2
Unwanted sexual remarks or advances from strangers (e.g., catcalling)	9%	10%	10%	6%	9%	7%	10%	6%	6%	12%	14%	10%	12%	8%	8%	2%
	26	6	15	5	19	7	17	3	5	1	10	6	6	1	2	1
Discrimination/harassment (e.g., race, national origin, etc.)	33%	26%	30%	41%	28%	43%	18%	56%	36%	59%	22%	28%	23%	36%	28%	54%
	53	8	25	20	33	20	16	16	17	4	17	10	5	6	5	10
Something else	3%	-	4%	3%	4%	<1%	5%	3%	2%	-	3%	2%	-	4%	4%	2%
	6	0	4	2	5	1	4	1	1	0	1	2	0	1	1	1
Don't know/Refusal	<1%	-	1%	-	1%	-	1%	-	-	-	-	-	-	-	-	2%
	1	0	1	0	1	0	1	0	0	0	0	0	0	0	0	1

Please specify the political issues and/or public policies you feel most impacted by. (Recorded from open-ended responses)

[Respondents who chose "Politics/policies affecting women"]

	Total n=363	Region			College		Race/Ethnicity				Age					
		North n=64	Central n=192	South n=107	No n=225	Yes n=138	White n=229	AfrAm/ Black n=43	Hisp n=75	Other n=16	18-24 n=74	25-34 n=76	35-44 n=59	45-54 n=42	55-64 n=49	65+ n=63
Reproductive Rights	30%	29%	25%	36%	28%	31%	32%	28%	30%	16%	47%	35%	37%	25%	30%	21%
	128	21	68	39	78	50	85	15	24	4	35	29	24	11	17	12
Health/Healthcare	10%	17%	9%	8%	10%	11%	12%	6%	10%	4%	3%	12%	12%	10%	13%	9%
	36	8	18	10	20	16	25	3	7	1	3	7	7	5	7	7
Discrimination/Equality Issues	14%	14%	16%	12%	12%	15%	12%	16%	10%	40%	14%	17%	19%	13%	7%	14%
	48	11	22	15	30	18	27	7	9	5	9	14	9	5	3	8
Economy/Inflation	19%	14%	24%	16%	22%	15%	17%	26%	20%	16%	8%	12%	14%	31%	20%	23%
	56	8	34	14	36	20	33	6	15	2	5	7	7	11	11	15
Political Division/Lack of Trust in Politicians	7%	8%	5%	9%	5%	9%	7%	6%	5%	12%	-	2%	5%	4%	7%	12%
	15	4	3	8	8	7	11	1	2	1	0	1	3	2	2	7
Other	18%	17%	19%	17%	18%	19%	18%	18%	20%	8%	19%	17%	9%	13%	23%	21%
	63	10	36	17	37	26	38	9	14	2	14	14	6	6	9	14
Don't Know/Refusal	3%	2%	3%	3%	5%	1%	3%	2%	4%	4%	8%	6%	5%	4%	-	-
	17	2	11	4	16	1	10	2	4	1	8	4	3	2	0	0

Which of the following issues surrounding violence against women impacts you the most?

[Respondents who chose "Violence against women"]

	Total n=367	Region			College		Race/Ethnicity				Age					
		North n=71	Central n=186	South n=110	No n=280	Yes n=87	White n=193	AfrAm/ Black n=70	Hisp n=95	Other n=9	18-24 n=110	25-34 n=73	35-44 n=45	45-54 n=41	55-64 n=52	65+ n=46
Domestic or dating violence	17%	18%	15%	19%	18%	15%	16%	23%	15%	8%	15%	19%	22%	22%	22%	9%
	63	12	30	21	47	16	32	16	14	1	15	13	10	10	11	4
Violence by strangers outside the home	16%	14%	18%	14%	14%	21%	20%	14%	10%	17%	9%	12%	3%	14%	22%	25%
	52	10	27	15	38	14	34	10	7	1	13	8	2	6	11	12
Violence at school	5%	5%	5%	6%	6%	4%	7%	7%	3%	-	4%	3%	8%	6%	6%	8%
	18	3	9	6	14	4	11	4	3	0	4	2	3	2	3	4
Elder abuse	9%	7%	7%	12%	8%	11%	14%	7%	4%	-	2%	4%	3%	<1%	7%	19%
	24	4	10	10	17	7	17	4	3	0	3	2	1	4	5	9
Workplace violence (e.g., sexual harassment)	5%	<1%	4%	9%	5%	6%	1%	11%	8%	8%	11%	6%	-	4%	6%	5%
	19	1	9	9	15	4	5	6	7	1	11	4	0	1	2	1
Sexual assault	24%	35%	22%	23%	23%	27%	17%	25%	31%	67%	37%	28%	43%	18%	17%	15%
	98	26	43	29	74	24	41	18	33	6	39	19	19	7	8	6
Emotional/psychological abuse, or fear	20%	18%	25%	15%	22%	15%	21%	11%	27%	-	20%	25%	16%	22%	17%	18%
	76	11	47	18	61	15	42	9	25	0	22	19	6	10	10	9
Something else	3%	4%	5%	2%	4%	1%	4%	3%	3%	-	2%	4%	5%	4%	4%	2%
	15	3	10	2	12	3	9	3	3	0	3	5	3	1	2	1
Don't know/Refusal	<1%	<1%	<1%	-	<1%	-	1%	-	-	-	-	<1%	<1%	-	-	-
	2	1	1	0	2	0	2	0	0	0	0	1	1	0	0	0

In general, where do you personally feel most at risk of abuse, assault, or harassment?

[Respondents who chose "Violence against women"]

	Total n=367	Region			College		Race/Ethnicity				Age					
		North n=71	Central n=186	South n=110	No n=280	Yes n=87	White n=193	AfrAm/ Black n=70	Hisp n=95	Other n=9	18-24 n=110	25-34 n=73	35-44 n=45	45-54 n=41	55-64 n=52	65+ n=46
Online (for example, on social media)	10%	7%	9%	13%	10%	12%	12%	10%	8%	8%	13%	10%	8%	8%	6%	14%
	38	6	18	14	27	11	21	9	7	1	15	7	3	3	3	7
At home	10%	16%	11%	7%	12%	5%	9%	18%	9%	-	4%	15%	16%	8%	16%	6%
	38	11	19	8	33	5	20	12	6	0	5	11	8	4	8	2
In public spaces (for example, transport, on the streets)	66%	67%	64%	68%	63%	75%	65%	54%	73%	92%	66%	64%	62%	71%	61%	71%
	234	46	115	73	173	61	122	37	67	8	72	44	28	27	30	33
In the place where I work	6%	3%	6%	6%	7%	2%	3%	12%	7%	-	9%	4%	5%	8%	4%	5%
	22	2	13	7	19	3	7	6	9	0	9	4	3	3	2	1
At school	2%	<1%	3%	1%	2%	2%	1%	3%	4%	-	7%	3%	3%	-	-	1%
	10	1	6	3	7	3	2	3	5	0	6	2	1	0	0	1
Somewhere else	6%	7%	7%	4%	6%	4%	11%	4%	1%	-	2%	4%	5%	6%	13%	5%
	24	5	15	4	20	4	20	3	1	0	3	5	2	4	8	2
Don't know/Refusal	<1%	-	-	1%	<1%	-	1%	-	-	-	-	-	-	-	2%	-
	1	0	0	1	1	0	1	0	0	0	0	0	0	0	1	0

Which of the following substance abuse issues have affected you or someone close to you? (Select all that apply)*

[All respondents]

	Total n=1,500	Region			College		Race/Ethnicity				Age					
		North n=301	Central n=761	South n=438	No n=1031	Yes n=468	White n=919	AfrAm/ Black n=214	Hisp n=311	Other n=54	18-24 n=302	25-34 n=267	35-44 n=270	45-54 n=203	55-64 n=241	65+ n=217
Alcohol	33%	31%	31%	36%	34%	31%	35%	31%	31%	28%	39%	35%	34%	34%	30%	30%
	517	99	260	158	356	161	328	64	104	19	112	100	94	72	76	63
Tobacco	26%	30%	26%	23%	26%	24%	28%	19%	25%	2<1%	24%	21%	29%	24%	30%	25%
	399	89	204	106	292	107	270	37	78	12	70	67	81	52	77	52
Over-the-counter drugs	5%	7%	4%	4%	5%	4%	3%	6%	6%	3%	10%	6%	5%	3%	3%	3%
	80	20	45	15	54	26	39	15	23	3	30	16	15	8	5	6
Prescription drugs	14%	18%	13%	13%	15%	11%	15%	12%	13%	11%	15%	14%	21%	15%	13%	9%
	240	61	120	59	182	58	162	29	42	7	49	47	61	31	32	20
Illegal drugs	21%	23%	19%	22%	23%	18%	21%	27%	20%	17%	26%	23%	26%	21%	19%	17%
	341	71	172	98	251	90	210	54	67	9	78	67	68	45	48	35
Something else	1%	1%	1%	2%	2%	1%	1%	3%	1%	-	3%	3%	1%	<1%	<1%	1%
	22	5	8	9	18	4	11	6	5	0	8	6	4	1	1	2
None - I don't know anyone with a substance abuse problem	45%	41%	48%	43%	43%	49%	43%	50%	45%	54%	41%	47%	39%	48%	43%	48%
	637	117	339	182	414	223	372	103	136	27	124	112	107	90	98	107
Don't know/Refusal	1%	1%	<1%	1%	1%	1%	1%	1%	-	-	1%	<1%	-	<1%	<1%	1%
	7	2	1	4	5	2	5	2	0	0	1	1	0	1	1	3

*Note. Columns may add up to more than 100% for this select-all question.

Which of the following issues related to COVID-19 has impacted you the most?

[All respondents]

	Total n=1,500	Region			College		Race/Ethnicity				Age					
		North n=301	Central n=761	South n=438	No n=1031	Yes n=468	White n=919	AfrAm/ Black n=214	Hisp n=311	Other n=54	18-24 n=302	25-34 n=267	35-44 n=270	45-54 n=203	55-64 n=241	65+ n=217
Loss of employment or loss of hours due to COVID-19	14%	14%	16%	12%	15%	12%	13%	17%	15%	14%	13%	24%	18%	16%	14%	5%
	233	45	132	56	167	66	137	40	49	7	39	68	45	35	33	13
School/childcare closures	7%	6%	6%	8%	6%	9%	4%	7%	11%	7%	12%	9%	12%	8%	4%	2%
	115	19	55	41	69	46	57	21	33	4	35	26	32	13	5	4
Getting sick with COVID-19	18%	17%	19%	17%	18%	18%	19%	13%	19%	13%	22%	18%	17%	19%	15%	18%
	288	55	158	75	201	87	188	33	58	9	72	49	49	38	40	40
Family member(s) getting sick with COVID-19	16%	18%	15%	16%	15%	18%	14%	19%	18%	19%	22%	19%	14%	12%	17%	15%
	244	57	113	74	168	76	137	38	59	10	61	46	39	24	45	29
Death of a family member or friend due to COVID-19	13%	16%	11%	15%	14%	12%	12%	20%	14%	11%	12%	13%	14%	17%	11%	13%
	186	48	79	59	132	54	101	35	43	7	33	33	33	35	25	27
Isolation from friends/family	2%	1%	1%	2%	1%	2%	2%	1%	-	1%	1%	0%	-	1%	-	5%
	14	3	6	5	6	8	12	1	0	1	1	1	0	2	0	10
Something else	4%	2%	4%	3%	4%	3%	5%	2%	2%	2%	1%	2%	2%	4%	4%	5%
	48	7	28	13	30	18	38	3	6	1	4	7	7	7	11	12
None of these	27%	25%	27%	27%	27%	26%	31%	20%	21%	32%	19%	14%	23%	24%	34%	36%
	365	65	187	113	253	111	245	41	62	15	56	35	63	48	82	81
Don't know/Refusal	1%	1%	1%	<1%	<1%	<1%	1%	<1%	<1%	-	<1%	<1%	1%	<1%	-	<1%
	7	2	3	2	5	2	4	2	1	0	1	2	2	1	0	1

How responsive do you think your local government is to the needs of women in your city or county?

[All respondents]

	Total n=1,500	Region			College			Race/Ethnicity				Age				
		North n=301	Central n=761	South n=438	No n=1031	Yes n=468	White n=919	AfrAm/ Black n=214	Hisp n=311	Other n=54	18-24 n=302	25-34 n=267	35-44 n=270	45-54 n=203	55-64 n=241	65+ n=217
Very responsive	14%	11%	12%	16%	14%	13%	10%	11%	23%	11%	14%	17%	15%	1<1%	15%	12%
	192	35	93	64	139	53	94	27	67	4	42	41	36	17	33	23
Somewhat responsive	40%	40%	38%	42%	36%	46%	39%	39%	39%	51%	39%	37%	41%	40%	38%	42%
	574	115	284	175	362	212	338	87	120	27	110	101	105	79	87	92
Not at all responsive	26%	27%	28%	23%	26%	26%	28%	29%	22%	16%	30%	32%	24%	26%	22%	23%
	430	90	230	110	293	137	285	59	77	9	95	88	81	58	59	49
I don't know enough to say	20%	21%	21%	20%	24%	14%	22%	2<1%	16%	22%	17%	14%	19%	23%	24%	22%
	294	59	148	87	231	62	194	39	47	14	55	36	45	47	59	52
Refusal	<1%	1%	1%	1%	1%	1%	1%	1%	-	-	-	<1%	1%	1%	1%	1%
	10	2	6	2	6	4	8	2	0	0	0	1	3	2	3	1

How responsive do you think your state government is to the needs of women Florida?

[All respondents]

	Total n=1,500	Region			College			Race/Ethnicity				Age				
		North n=301	Central n=761	South n=438	No n=1031	Yes n=468	White n=919	AfrAm/ Black n=214	Hisp n=311	Other n=54	18-24 n=302	25-34 n=267	35-44 n=270	45-54 n=203	55-64 n=241	65+ n=217
Very responsive	16%	13%	15%	18%	16%	15%	14%	11%	23%	12%	18%	17%	15%	14%	14%	17%
	229	43	112	74	168	61	129	29	66	5	53	41	42	25	33	35
Somewhat responsive	35%	37%	32%	38%	34%	37%	33%	39%	37%	36%	32%	35%	39%	37%	39%	30%
	525	108	247	156	343	168	293	85	114	18	93	92	98	73	88	67
Not at all responsive	34%	32%	38%	30%	31%	41%	37%	36%	28%	32%	32%	36%	31%	30%	32%	39%
	511	99	290	136	328	197	349	67	90	18	102	101	94	65	83	80
I don't know enough to say	20%	18%	15%	14%	19%	8%	16%	14%	12%	20%	17%	13%	15%	19%	15%	14%
	231	50	111	70	189	41	145	33	40	13	53	32	36	39	37	34
Refusal	<1%	<1%	<1%	<1%	<1%	<1%	<1%	-	<1%	-	1%	<1%	<1%	<1%	-	<1%
	4	1	1	2	3	1	3	0	1	0	1	1	0	1	0	1

If there was one change that could be made in your community that would result in the greatest positive impact on women, what would it be?

(Recoded from open-ended responses)

[All respondents]

	Total n=1,500	Region			College			Race/Ethnicity				Age				
		North n=301	Central n=761	South n=438	No n=1031	Yes n=468	White n=919	AfrAm/ Black n=214	Hisp n=311	Other n=54	18-24 n=302	25-34 n=267	35-44 n=270	45-54 n=203	55-64 n=241	65+ n=217
Cost of living/affordable housing/childcare	7%	8%	7%	6%	7%	6%	6%	7%	6%	8%	4%	9%	6%	5%	9%	6%
	99	23	54	22	70	29	65	14	16	4	13	23	17	12	22	12
Public programs/assistance	10%	11%	8%	13%	10%	11%	7%	14%	16%	10%	6%	11%	14%	16%	9%	6%
	136	33	56	47	94	42	66	23	42	5	17	26	34	27	20	12
Healthcare	9%	12%	8%	8%	9%	8%	11%	5%	6%	13%	4%	8%	13%	7%	9%	10%
	132	37	63	32	96	36	96	8	19	8	13	23	35	15	23	23
Employment/education	16%	16%	17%	16%	15%	18%	17%	12%	16%	23%	7%	11%	18%	20%	17%	19%
	226	45	120	61	144	82	156	21	39	10	25	35	48	40	39	39
Issues of equality/discrimination	8%	8%	7%	9%	8%	7%	5%	13%	8%	14%	11%	11%	7%	8%	8%	5%
	112	24	51	37	82	30	51	25	29	7	31	23	16	16	15	11
Public policy/political leadership	16%	16%	16%	15%	13%	21%	21%	13%	10%	2%	17%	15%	11%	11%	12%	24%
	244	44	129	71	147	97	176	32	34	2	52	47	34	24	34	53
Violence against women	5%	5%	6%	3%	5%	6%	5%	5%	4%	5%	6%	3%	4%	7%	5%	6%
	78	16	44	18	55	23	51	10	16	1	19	11	11	14	13	10
Women in leadership/having a voice	4%	2%	4%	4%	4%	5%	4%	5%	3%	1%	5%	4%	4%	4%	3%	4%
	61	9	33	19	35	26	38	9	12	1	14	11	10	10	8	8
Other	8%	9%	8%	9%	9%	8%	6%	10%	13%	6%	15%	12%	8%	7%	10%	4%
	138	28	65	45	97	41	67	26	40	5	42	31	22	13	20	10
Don't know/Nothing/Refusal	18%	14%	19%	18%	21%	12%	17%	17%	19%	19%	26%	16%	17%	16%	19%	17%
	274	42	146	86	211	62	153	46	64	11	76	37	43	32	47	39

On a scale from 0 to 10, how familiar are you with the Florida Commission on the Status of Women? [Sliding scale]

[All respondents]

	Total n=	Region			College			Race/Ethnicity				Age				
		North n=	Central n=	South n=	No n=	Yes n=	White n=	AfrAm/ Black n=	Hisp n=	Other n=	18-24 n=	25-34 n=	35-44 n=	45-54 n=	55-64 n=	65+ n=
Mean	2.54	2.79	2.34	2.65	2.57	2.48	1.92	3.16	3.57	2.18	4.16	3.97	2.98	2.22	1.95	1.55
Median	1	1	1	1	1	1	1	2	3	1	4	4	2	1	1	1

Which of the following categories best describes your age? Are you
[All respondents]

	Total n=1,500	Region		
		North n=301	Central n=761	South 438
18 to 24 years old	10% 302	11% 60	9% 146	11% 96
25 to 34 years old	16% 267	17% 57	14% 127	18% 83
35 to 44 years old	15% 270	19% 65	14% 137	14% 68
45 to 54 years old	16% 203	15% 40	15% 98	17% 65
55 to 64 years old	17% 241	16% 44	18% 135	15% 62
65 or older	27% 217	23% 35	30% 118	25% 64
Don't know/Refusal	- 0	- 0	- 0	- 0

What is your racial/ethnic background? Are you:
[All respondents]

	Total n=1,500	Region		
		North n=301	Central n=761	South 438
White/Caucasian	53% 919	59% 197	59% 517	43% 205
Black/African-American	15% 214	20% 59	14% 89	14% 66
Hispanic/Latino	26% 311	14% 32	20% 127	38% 152
Other	6% 54	6% 13	7% 26	5% 15
Don't know/Refusal	<1% 2	- 0	<1% 2	- 0

Are you the parent or guardian of a child under 18 who lives in Florida?
[All respondents]

	Total n=1,500	Region		
		North n=301	Central n=761	South 438
Yes	28% 472	31% 108	26% 229	29% 135
No	71% 1018	68% 190	73% 527	70% 301
Don't know/Refusal	<1% 10	1% 3	1% 5	1% 2

What is your highest grade in school or year of college you have completed?
[All respondents]

	Total n=1,500	Region		
		North n=301	Central n=761	South 438
Less than high school degree	3% 63	4% 15	4% 40	2% 8
High school graduate/GED	43% 662	48% 148	43% 335	41% 179
Currently in college or has AA degree	19% 306	20% 59	20% 161	17% 86
Bachelor's degree (B.A. or B.S.)	25% 333	22% 58	24% 165	27% 110
Graduate degree or post-graduate degree (M.A., M.S., MBA, PhD, M.D., J.D.)	10% 135	7% 21	9% 59	14% 55
Don't know/Refusal	<1% 1	- 0	<1% 1	- 0

What is your current marital status?

[All respondents]

	Total n=1,500	Region		
		North n=301	Central n=761	South 438
Married	40%	38%	41%	38%
	540	115	276	149
Widowed	9%	9%	11%	7%
	99	18	55	26
Divorced	16%	17%	13%	20%
	203	43	92	68
Separated	2%	2%	2%	2%
	32	8	15	9
Single (never married)	29%	31%	29%	29%
	572	108	300	164
Something else:	3%	3%	2%	4%
	46	9	17	20
Don't know/Refusal	<1%	-	1%	<1%
	8	0	6	2

Which of the following categories best describes your employment status?

[All respondents]

	Total n=1,500	Region		
		North n=301	Central n=761	South 438
Employed, working full-time	30%	32%	26%	33%
	488	101	235	152
Employed, working part-time	11%	10%	10%	13%
	200	39	93	68
Self-employed	8%	7%	7%	9%
	125	24	63	38
Not employed, looking for work	9%	11%	8%	9%
	149	39	64	46
Not employed, NOT looking for work	3%	3%	3%	2%
	46	11	25	10
Retired	27%	23%	31%	24%
	261	45	145	71
Disabled, not able to work	7%	7%	10%	5%
	108	19	68	21
Student	3%	2%	3%	3%
	73	8	39	26
Something else	3%	5%	3%	2%
	45	15	25	5
Don't know/Refusal	<1%	-	1%	<1%
	5	0	4	1

What is your annual **household** income?

[All respondents]

	Total n=1,500	Region		
		North n=301	Central n=761	South 438
Under \$25,000	23%	27%	26%	19%
	372	82	206	84
\$25,000 – \$49,999	32%	33%	33%	30%
	465	91	244	130
\$50,000 – \$74,999	21%	17%	20%	23%
	304	60	142	102
\$75,000 – \$99,999	12%	10%	11%	14%
	180	31	91	58
\$100,000 – \$149,999	8%	6%	7%	9%
	107	20	46	41
\$150,000 – \$199,999	3%	3%	2%	3%
	42	9	20	13
\$200,000 and above	2%	3%	2%	2%
	24	7	10	7
Don't know/Refusal	<1%	<1%	<1%	1%
	6	1	2	3

Is there anything else you'd like to add for consideration by the Florida Commission on the Status of Women?

[All respondents]*

	Total n=338	Region			College		Race/Ethnicity				Age					
		North n=58	Central n=187	South n=93	No n=203	Yes n=135	White n=198	AfrAm/ Black n=44	Hisp n=79	Other n=17	18-24 n=47	25-34 n=59	35-44 n=59	45-54 n=46	55-64 n=69	65+ n=58
Reproductive Rights/Healthcare	14%	15%	17%	10%	17%	10%	18%	19%	9%	3%	21%	7%	10%	9%	17%	18%
	51	9	33	9	33	18	32	9	9	1	9	6	6	5	14	11
Public Assistance/Support	16%	23%	12%	20%	19%	13%	15%	13%	16%	31%	8%	24%	27%	19%	20%	6%
	57	13	27	17	40	17	35	6	11	5	4	11	16	9	12	5
Employment/Pay	13%	6%	17%	10%	12%	14%	10%	19%	11%	22%	4%	17%	8%	20%	8%	14%
	38	4	24	10	21	17	19	7	9	3	2	9	5	9	6	7
Discrimination/Harrassment	12%	9%	12%	12%	9%	15%	13%	15%	8%	16%	8%	5%	6%	17%	8%	18%
	35	3	21	11	18	17	21	7	5	2	5	3	5	6	6	10
More Visibility/Awareness of FCSW	11%	19%	8%	12%	11%	11%	13%	9%	10%	6%	8%	7%	10%	10%	11%	15%
	35	9	17	9	22	13	23	3	7	2	5	4	5	4	8	9
Women's Rights/Advocacy	11%	11%	10%	12%	8%	15%	9%	11%	15%	9%	17%	17%	21%	9%	7%	5%
	43	8	20	15	20	23	24	5	12	2	7	12	12	4	5	3
Other	23%	17%	24%	24%	23%	23%	22%	15%	32%	13%	33%	24%	17%	17%	29%	23%
	79	12	45	22	49	30	44	7	26	2	15	14	10	9	18	13

*Note. Respondents who did not answer this question were excluded from analysis

Appendix II. Survey Instrument

Voices of Florida Women Survey 2022

Thank you for your participation. If there are any questions you are unsure about or refuse to answer, just select the next button to move on to the next question.

WOMAN. Are you a woman 18 years of age or older?

1. Yes
2. No [SKIP TO END]

COUNTY. What Florida county do you live in?

- | | | |
|---------------|------------------|------------------------------------|
| 1. Alachua | 24. Hardee | 47. Okeechobee |
| 2. Baker | 25. Hendry | 48. Orange |
| 3. Bay | 26. Hernando | 49. Osceola |
| 4. Bradford | 27. Highlands | 50. Palm Beach |
| 5. Brevard | 28. Hillsborough | 51. Pasco |
| 6. Broward | 29. Holmes | 52. Pinellas |
| 7. Calhoun | 30. Indian River | 53. Polk |
| 8. Charlotte | 31. Jackson | 54. Putnam |
| 9. Citrus | 32. Jefferson | 55. St. Johns |
| 10. Clay | 33. Lafayette | 56. St. Lucie |
| 11. Collier | 34. Lake | 57. Santa Rosa |
| 12. Columbia | 35. Lee | 58. Sarasota |
| 13. DeSoto | 36. Leon | 59. Seminole |
| 14. Dixie | 37. Levy | 60. Sumter |
| 15. Duval | 38. Liberty | 61. Suwannee |
| 16. Escambia | 39. Madison | 62. Taylor |
| 17. Flagler | 40. Manatee | 63. Union |
| 18. Franklin | 41. Marion | 64. Volusia |
| 19. Gadsden | 42. Martin | 65. Wakulla |
| 20. Gilchrist | 43. Miami-Dade | 66. Walton |
| 21. Glades | 44. Monroe | 67. Washington |
| 22. Gulf | 45. Nassau | 68. Don't live in FL [SKIP TO END] |
| 23. Hamilton | 46. Okaloosa | |

CHALLENGE1. What do you consider to be the most impactful challenge or problem that you face in your daily life?

CHALLENGE2. Which of the following challenges impact you the most? (Choose up to three)

1. Economic security (e.g., unemployment/underemployment, housing)
2. Caregiving (including caring for children, elders, and others)
3. Healthcare (including mental health)
4. Women's access to leadership roles
5. Access to higher education/career training
6. Workplace Issues
7. Societal/social gender discrimination
8. Political issues & public policies affecting women
9. Violence against women
10. None of these

[If CHALLENGE2 == 1]

ECON. Which of the following economic challenges impacts you the most?

1. Availability of well-paying jobs
2. Paying rent or mortgage
3. Finding affordable housing in your community or desired area
4. Paying bills (other than rent/mortgage)
5. Paying for food for yourself, your family, or household
6. Saving money for the future (e.g., college, retirement)
7. Something else: _____

COVID_ECON. Thinking of the economic challenges you face, would you say that COVID-19...

1. Has been the root cause of your challenges
2. Not the root cause, but exacerbated your challenges
3. Is not related to your challenges

[If CHALLENGE2 == 2]

CAREGIVING. Which of the following caregiving challenges impacts you the most?

1. Access to social services related to caregiving
2. Workplace/social support for breastfeeding
3. Workplace flexibility for family needs
4. Caring for elders, parents, or extended family members
5. Lack of convenient/affordable childcare options
6. Single parenting
7. Parenting skills and resources
8. Not being able to spend enough time with children (or other persons being cared for)
9. Something else: _____

CHILDCARE. Which of the following childcare challenges impacts you the most?

1. Available care for sick children
2. Quality childcare with trusted caregivers and preferred activities
3. Childcare location near home or work
4. Available "after-hours" care for children, extended care hours
5. Cost of childcare
6. Something else: _____
7. Not applicable

[If CHALLENGE2 == 3]

HEALTH. Which of the following health-related challenges impacts you the most?

1. Access to quality, affordable healthcare (including dental, vision, etc.)
2. Availability of affordable health insurance
3. Access to reproductive/sexual health services
4. Access to preventative care
5. General health education
6. Smoking and substance abuse
7. Cost of prescription drugs
8. Access to mental health counseling
9. Workplace flexibility for illness and doctor visits, or lack of paid sick leave
10. Something else: _____

INSURANCE. Which of the following health insurance challenges impacts you the most?

1. Cost of health insurance
2. No or inadequate benefits through employer
3. Navigating the health insurance system
4. Finding a provider covered by insurance plan
5. Lack of coverage for vital health services/procedures
6. Something else: _____

[If CHALLENGE2 == 4]

LEADERSHIP. Which of the following barriers to women in leadership impacts you the most?

1. Lack of opportunities for leadership in the workplace
2. Lack of women leaders in the community and/or politics
3. Lack of leadership opportunities for female students
4. Lack of mentoring opportunities for women
5. Lack of training/development resources for women in leadership
6. Lack of support for women leaders
7. Lack of flexibility for work-life balance
8. Something else: _____

[If CHALLENGE2 == 5]

EDUCATION. Which of the following challenges to higher education and career training impacts you the most?

1. Tuition cost and affordability
2. Inadequate resources for financial aid, grants or scholarships
3. Lack of opportunities for trade skill training
4. Paying off student loans or debt
5. Something else: _____

[If CHALLENGE2 ==6]

WORKPLACE. Which of the following workplace challenges impacts you or women you know the most?

1. Transportation to/from work
2. Gender pay inequity
3. Inadequate pay/benefits
4. Lack of flexible work schedule/work from home options
5. Inadequate job training/professional development
6. Lack of opportunities for advancement
7. Lack of mentoring opportunities for women (both mentor and mentee)
8. Discrimination in hiring/promotion
9. Lack of accessibility/accommodations for disabilities
10. Lack of convenient/affordable childcare options
11. Workplace discrimination/harassment
12. Something else: _____

[If CHALLENGE2 == 7]

SOCIAL. Which of the following forms of societal or social gender discrimination impacts you the most?

1. Being treated differently than male counterparts
2. Feeling societal pressure to conform to traditional gender roles
3. Feeling societal pressure to adhere to physical beauty standards
4. Stress or pressure from social media
5. Unwanted sexual remarks or advances from people you know (e.g., friends, coworkers)
6. Unwanted sexual remarks or advances from strangers (e.g., catcalling)
7. Discrimination/harassment (e.g., race, national origin, etc.)
8. Something else: _____

[If CHALLENGE2 == 8]

POLICY. Please specify the political issues and/or public policies you feel most impacted by:

[If CHALLENGE2 == 9]

VIOLENCE. Which of the following issues surrounding violence against women impacts you the most?

1. Domestic or dating violence
2. Violence by strangers outside the home
3. Violence at school
4. Elder abuse
5. Workplace violence (e.g., sexual harassment)
6. Sexual assault
7. Emotional/psychological abuse, or fear
8. Something else: _____

WHERE. In general, where do you personally feel most at risk of abuse, assault, or harassment?

1. Online (for example, on social media)
2. At home
3. In public spaces (for example, transport, on the streets)
4. In the place where I work
5. At school
6. Somewhere else: _____

[Everyone]

SUBSTANCE. Which of the following substance abuse issues have affected you or someone close to you? (Select all that apply).

1. Alcohol
2. Tobacco
3. Over-the-counter drugs
4. Prescription drugs
5. Illegal drugs
6. Something else: _____
7. None - I don't know anyone with a substance abuse problem

COVID. Which of the following issues related to COVID-19 has impacted you the most?

1. Loss of employment or loss of hours due to COVID-19
2. School/childcare closures
3. Getting sick with COVID-19
4. Family member(s) getting sick with COVID-19
5. Death of a family member or friend due to COVID-19
6. Something else: _____
7. None of these

LOCAL. How responsive do you think your local government is to the needs of women in your city or county?

1. Very responsive
2. Somewhat responsive
3. Not at all responsive
4. I don't know enough to say

STATE. How responsive do you think your state government is to the needs of women Florida?

1. Very responsive
2. Somewhat responsive
3. Not at all responsive
4. I don't know enough to say

CHANGE. If there was one change that could be made in your community that would result in the greatest positive impact on women, what would it be?

FCSW. On a scale from 0 to 10, how familiar are you with the Florida Commission on the Status of Women? [Sliding scale] just click that will hold it as a Spanish language

0 I have never heard of the Florida Commission on the Status of Women

5 I have some knowledge of the Florida Commission on the Status of Women

10 I am very familiar with the Florida Commission on the Status of Women

These last few questions are about you, so we can compare your responses to others in the survey.

AGE. Which of the following categories best describes your age? Are you:

1. 18 to 24 years old
2. 25 to 34 years old
3. 35 to 44 years old
4. 45 to 54 years old
5. 55 to 64 years old
6. 65 or older

HISP. Are you of Latino or Hispanic ethnic background?

1. Yes [SKIP TO CHILD]
2. No

RACE. What is your racial/ethnic background? Are you:

1. White/Caucasian
2. Black/African-American
3. American Indian or Alaska Native
4. Asian
5. Native Hawaiian or Other Pacific Islander
6. Something else: _____

CHILD. Are you the parent or guardian of a child under 18 who lives in Florida?

1. Yes
2. No

EDU. What is your highest grade in school or year of college you have completed?

1. Less than high school degree
2. High school graduate/GED
3. Currently in college or has AA degree
4. Bachelor's degree (B.A. or B.S.)
5. Graduate degree or post-graduate degree (M.A., M.S., MBA, PhD, M.D., J.D.)

MARITAL. What is your current marital status?

1. Married
2. Widowed
3. Divorced
4. Separated
5. Single (never married)
6. Something else: _____

EMPLOY. Which of the following categories best describes your employment status?

1. Employed, working full-time
2. Employed, working part-time
3. Self-employed
4. Not employed, looking for work
5. Not employed, NOT looking for work
6. Retired
7. Disabled, not able to work
8. Student
9. Something else: _____

INCOME. What is your annual **household** income?

1. Under \$25,000
2. \$25,000 – \$49,999
3. \$50,000 – \$74,999
4. \$75,000 – \$99,999
5. \$100,000 – \$149,999
6. \$150,000 – \$199,999
7. \$200,000 and above

ELSE. Is there anything else you'd like to add for consideration by the Florida Commission on the Status of Women?

THANK. Thank you for taking the time to complete this survey. We truly value the information you have provided. You can find the latest updates on this project as well as upcoming events from the Commission's website at fcsw.net.

*Many Thanks,
The Florida Commission on the Status of Women*